

Since 1933

*Our Mission is to promote the welfare of the game of golf, the science and art of golf course management, the organizational and business effectiveness of the profession, the professional image and well-being of individual members, and to unite golf course superintendents within the Greater Kansas City area.*

Heart of America Chapter

# GCSAA

GOLF COURSE SUPERINTENDENTS ASSOCIATION OF AMERICA



Environmental  
Institute for Golf

Governor's Club



# Heart Beat

May 2016

## CALENDAR OF EVENTS

**May 4, 2016**

Wee One Tournament  
Tiffany Greens Golf Course

**May 16, 2016**

Footprints in Fairways  
Ironhorse Golf Club

**May 23, 2016**

Joint Meeting w/KGCSA  
Falcon Ridge Golf Course

**July 11, 2016**

S&R Tournament  
Kansas City Country Club

**August 1, 2016**

Employee Tournament  
Sunflower Hills Golf Course

## JOINT MEETING WITH KANSAS GCSA



**Falcon Ridge Golf Course - Lenexa, Kansas**

**May 23, 2016**

**Schedule:**

**11:00 a.m. - Registration**

**12:00 p.m. - Lunch**

**1:00 p.m. - Shotgun Start**

**Host Superintendent**



**Andy Klein, CGCS**



**Heart of America GCSA**

638 W. 39th Street

Kansas City, MO 64111

816-561-5323

[www.hagcsa.org](http://www.hagcsa.org)

### Inside This Issue

President's Message

First Report of Carrot Beetle

Committee Reports

Tips for Public Speaking

Benefits of HAGCSA Membership

# TABLE of CONTENTS

President's Message .....	2
Board of Directors.....	3
We Are Golf .....	3
First Report of Carrot Beetle.....	5
Tournaments and Meetings Report .....	8
Membership Committee Report.....	9
Tips for Public Speaking.....	10
Rounds4Research Committee Report.....	11
Benefits of Membership.....	13
S&R Committee Report.....	14
Assistant Superintendent Committee Report .....	15
Registration Forms .....	16
Vendor Directory.....	24
Membership Application .....	25

## *President's Message*

Nothing signals the beginning of the golfing season like seeing the Masters on TV. The only thing that looks better than the golfer's game is the grass that they play on. Augusta National Golf Course is what every course aspires to be. The level of green that it is able to achieve is what all Superintendents are hopeful of before the realization that the budget and maintenance team for one hole at Augusta is larger than their whole budget or team. Whether I ever achieve this level of greenery or not, I still hope to someday attend the Masters, so I can cross it off my bucket list.



**Duane Sander, CGCS**  
Shoal Creek Golf Course

It is exciting to say that the calendar for May is a busy one. The first event is the Wee One event on May 4th at Tiffany Springs Golf Course. I highly encourage everyone to attend this event which raises money to support Superintendents and their families in the event of severe medical hardship. It is also a time of remembrance for friends like the late Mark Pierce and John Anderson.

The next event in May is the Footprints in Fairways on May 16th. This also raises money for a great cause, the SNAG (Starting New at Golf) program. This program get kids excited about golfing by teaching the game to students in elementary schools.

The combined meeting with KGCSA was also moved to May due to consistent inclement weather the past several years. I highly encourage everyone to attend as many events as possible. These events are for great causes and it is always good when we are able to give back. Heart events not only raise money for charities, but are also opportunities to see other member's golf courses and pick up insightful and helpful tips from other experts in the industry. I look forward to seeing everyone at these and future events.

Sincerely,  
HAGCSA President  
**Duane Sander, CGCS**



## Board of Directors

### President

Duane Sander, CGCS  
Shoal Creek Golf Course  
816-695-5908; dsander@kempersports.com

### Vice President

Andy Klein, CGCS  
Falcon Ridge Golf Course  
913-707-3563; andyklein@greatlifekc.net

### Secretary/Treasurer

Andrew Jones  
Swope Memorial Golf Course  
913-709-1001; ajones@orion-mgmt.com

### Immediate Past President

Steve Wilson, CGCS  
Milburn Country Club  
913-207-4038; steve@milburn.org

### Directors

Chris Benisch (Rounds 4 Research)  
Deer Creek Golf Course  
913-957-0861; cbenisch@arcisgolf.com

Matt Delventhal (S&R Tournament)  
Minor Park Golf Course  
816-916-0239; mdelventhal@gmail.com

Cory Henson  
Indian Creek Country Club (Membership)  
913-362-0097; coryhenson@hotmail.com

Mark Newton, CGCS (Public Relationship)  
Canyon Farms Golf Club  
913-515-3467; mnewton@greatlifekc.net

Ethan Shamet (Education)  
Falcon Lakes Golf Course  
913-244-3988; eshamet@yahoo.com

Brent Stephenson (Programs & Tournaments)  
Staley Farms Golf Club  
816-500-5421; brent.stephenson@greatlifegolf.com

### Special Directors

Grant Suderman (Assistant Program & Employee Tournament)  
Kansas City Country Club  
785-448-4267; gsuderman@kccc.com

Wes Kleffner (MO Cup Challenge)  
Bayer Environmental Science  
913-205-5381; wes.kleffner@bayer.com

Richard Shumate (Affiliate Liaison)  
Van Wall Equipment  
913-397-6009; richard.shumate@vanwall.com

### Editor

Andy Klein, CGCS  
Falcon Ridge Golf Course  
913-707-3563; andyklein@greatlifekc.net

### Chapter Delegate

Jeff White, CGCS  
Indian Creek Country Club  
913-617-5462; jwhite@inckc.com

### Executive Director

Kim Weitzel  
816-561-5323; kweitzel@westerneda.com



As you know, National Golf Day has successfully increased awareness of the golf industry on Capitol Hill. As We Are Golf looks to its ninth year of taking their message to our nation's lawmakers and regulators through this event, we are seeking to enhance our visibility and influence. Our goal is to engage the most Members of Congress during our visit, and to further increase the recognition of this day nationally.

To reach our goal, we would like to increase the number of GCSAA members who attend the in our Nation's Capital. Accordingly we would like for you to join your golf industry colleagues on Wednesday, May 18 for National Golf Day. The GCSAA registration fee for National Golf Day is \$50, and participants are responsible for all hotel and travel arrangements. A room block for GCSAA members has been reserved at the Radisson Hotel Reagan National Airport for \$169.00 a night.

The tentative agenda is as follows:

**Tuesday, May 17:**  
1-3:00 p.m. - National Arboretum Tour - optional  
4-5:30 p.m. - Briefing Meeting for Participants and Exhibitors (additional training on National Golf Day issues will be offered via webinar before the event)  
5:30 - 6:30 p.m. - National Golf Day Reception  
7 - 9:00 p.m. - GCSAA Delegation Evening Activity

**Wednesday, May 18:**  
9 a.m. - Golf Industry Photo  
9:30 a.m. - 5:00 p.m. - Legislative Visits (information on making Capitol Hill appointments will be available after April 1)

A final agenda will be provided when complete.

To register to attend this important event, <http://www.wearegolf.org/capitol-hill/national-golf-day/register-to-attend/>, complete and submit the registration form. Within 2-3 days of the registration form being submitted you will receive from the GCSAA Government Affairs department additional details which include hotel and payment information.

For questions, please contact Kaelyn Seymour at [kseymour@gcsaa.org](mailto:kseymour@gcsaa.org) or (800) 472-7878, ext. 3612.

**PLATINUM PARTNERS**



**GOLD PARTNERS**



**SILVER PARTNERS**



# **First Report of Carrot Beetle (*Tomarus gibbosus*) Damage to Golf Course Turf**

**By Matt S. Giese, Syngenta**

It's not often that a new insect pest is identified as damaging to turfgrass. The last report of a new insect pest in turfgrass happened in 2010 with the sugarcane beetle in North Carolina, and before that, in 2004 with European cranefly in New York. It's even less common for it to occur at a "golf course near you". In this case however, this new insect was discovered here in Kansas City in 2015 at two golf courses in different parts of the metro area, and it's presumed to be more widespread than that. The discussion that follows was briefly presented at the Common Ground conference in December and is based on a collaborative effort with Dr. Jonathon Larson at the University of Nebraska Extension and Dr. Daniel Potter at the University of Kentucky.

The account begins in early June of 2015 when Heritage Park

Golf Course in Olathe, KS reported digging and foraging by predators, likely raccoon or skunks, in the center of one of their greens. Historically, when these predators forage in late summer and into the fall, they are searching for white grubs and are quite adept at finding them. But while predator foraging in early June for white grubs is not unheard of, it also isn't very common. So the first assumption upon hearing the reports of foraging, were that there must be an issue related to grub insecticide performance (the green had been treated with a grub insecticide). However, a site visit confirmed no larvae (white grubs) to be present. Conversely, several adult beetles and burrows were observed on the collar and on the green surface. The adults looked initially similar to the common May/June beetles you'd find around your front porch

**Continued on page 7**



## **HERFORD □ NORBY**

### **G o l f C o u r s e A r c h i t e c t s**

Phone: 952.361.0644 Fax: 952.361.0645  
e-mail: [golfnorby@earthlink.net](mailto:golfnorby@earthlink.net) web: [www.herfortnorby.com](http://www.herfortnorby.com)

## Carrot Beetle

Continued from page 5

light in late May/early June, but not quite as large. Adult beetles were collected from Heritage Park and concurrently from Dubs Dread Golf Club in Kansas City, KS for specialist identification. Initially, identification was thought to be the sugarcane beetle, which is a difficult to control insect in the southeast US, primarily Florida. As it turns out, this beetle was very closely related to the sugarcane beetle and was identified as *Tomarus gibbosus*, also known as the Carrot beetle. This was the first report of direct or indirect damage from *T. gibbosus* in any turfgrass setting in the world.

### Beetle Description

The adults can be described as broadly oval with reddish brown to blackish coloration and range in length from 0.43-0.63 inches (Picture 1). They are distinguished from May/June beetles by a small tubercle (hornlike structure, Picture 1B) at the leading edge of the fovea (circular cuplike depression, Picture 1C) just behind the head. This fovea distinguishes them from the sugarcane beetle which lacks it. Larvae are typical C-shaped white grubs that bear a triangular patch of short straight hairs on the last abdominal segment but lacking rastral palladia, features that distinguish them from May/June beetle larvae (zipper-like double row palladia) and Japanese beetle larvae (V-pattern palladia). The adults were generally discovered at night or early in the morning in May and June, either crawling across the green, partially inserted into the soil, or adjacent to small piles of soil near a freshly dug burrow. Adult burrowing left behind circular or D-shape holes approximately 5/16 inches in diameter. Further dissection of the burrows yielded beetles just under the surface or in some cases 2-4 inches deep. Beetle activity was initially on and near the collars, but became distributed throughout the greens over time. Burrows and adults were found at various numbers on all greens at both courses with more heavily infested ones showing 15-20 burrows and beetles per green.

### Predator Damage

Predators, presumably searching for the adult beetles, caused additional damage to the greens at Heritage Park. Damage ranged from small scooped out depressions to larger patches measuring 8-12 inches across (Picture 2). While Dubs Dread also had a significant population of adult beetles, no predator foraging was observed.

While the carrot beetle is new to turfgrass, it is not new to other crops. It is considered a native species and is widely distributed throughout the US. The first damage to desirable plants in North America was reported in 1880, and first noted in Kansas in 1902. Published literature suggests adults are sporadic pests of corn, carrots, sunflowers, dahlia, sugar beets, cotton, sweet potato, oak, elm, parsnip, and celery. Adults feed on roots or burrow into stalks at ground level. The beetle larvae or grubs feed on decaying organic matter and roots of crops and weed plants. Their life cycle completes one generation per year. Adults overwinter deep in the soil (6 inches to 4 feet) and become active as temperatures warm in the spring through late June. Adults are nocturnal and attracted to light sources. Shortly after becoming active in the spring, adults mate underground and females deposit eggs at bases of plants in the soil from May to July. Larvae hatch in about 11 days, feed, pupate and then new adults emerge in September and October. New adults are active for a short time before entering diapause (winter dormancy). While there can be two separate adult flights in May/June and September/October, only one flight, May/June, was observed in 2015.

### Limited Knowledge of Carrot Beetle

Admittedly, we have limited information about how to manage this new pest. As described above, much of the life cycle is spent as an adult compared to other common beetle species that overwinter as larvae. This would require a different approach than the typical grub control methods that are now employed as most do not have activity against the beetle adults. Reports for control from the southeastern US on the closely related sugarcane beetle suggest targeting overwintered adults with a pyrethroid insecticide as soon as the beetles are observed crawling on greens or flying near lights in the spring. This approach may also be effective for the carrot beetle. Both Heritage Park and Dubs Dread applied pyrethroid insecticide treatments to suppress the adult beetles on greens in June. While the effects were short lived (about 10-14 days), the applications did seem to limit beetle burrowing and the resulting predator scavenging/turf damage. Adult activity did slow by late June and effectively stopped by July 1st. This was likely due to the completion of the mating/egg laying activities at that time. Whether or not the beetles

Continued on page 7

## Carrot Beetle

Continued from page 5

grub insecticides have any effect on the carrot beetle grubs. No larval feeding damage was observed on any greens at either golf course in 2015.

Moving forward in 2016, the question is whether we will observe these insects, and what threat, if any, they pose to desirable turf areas. In an effort to quantify the distribution of this pest in the KC metro and beyond, please feel free to report any adult beetle sightings or early season predator foraging, especially during the May/June timeframe, to the contact information below. We will know soon enough whether it is as sporadic a pest on turf as it is on other desirable plant species.

Contact Email: [matt.giese@syngenta.com](mailto:matt.giese@syngenta.com)

Phone: (913)669-5101

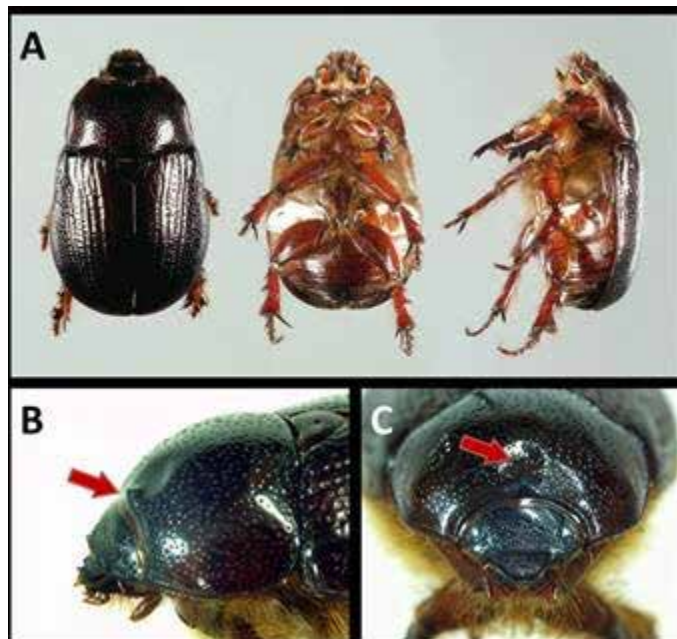
### References

Larson, J.L., Giese, M.S., and Potter, D.A. 2016. First Report of Carrot Beetle (*Tomarus gibbosus*) Damage to Golf Course Turf (Brief). *Crop, Forage & Turfgrass Manag.* Volume 2: 2016; DOI: 10.2134/cftm2015.0188

Billeisen, T.L., and R.L. Brandenburg. 2014. Biology and management of the sugarcane beetle (Coleoptera: Scarabaeidae) in turfgrass. *J. Integr. Pest Manage.* 5: 2014; DOI: <http://dx.doi.org/10.1603/IPM14008>.

Hayes, W.P. 1917. Studies on the life-history of *Ligyris gibbosus* Deg. (Coleoptera). *J. Econ. Entomol.* 10: 253-261.

Helgesen, R. G. and R. L. Post. 1967. Saprophagous Scarabaeidae of North Dakota. *North Dakota Insects*, Publication No. 7: 1-60.



Picture 1. A) adult carrot beetle B) tubercle C) fovea. (Photo courtesy of J. Kalisch)



Picture 2. Typical damage from predators foraging for adults. (Photo courtesy of D. Murphy)



Simplifying irrigation with smarter technology.  
That's intelligent.

Call Brian or Jamie today to learn how Rain Bird® can help!

Brian Freeman - Territory Manager - Ph: 913-530-3903

Jamie Chambers - Service - Ph: 913-530-4729

TurfWerks

[www.Turfwerks.com/RainBird/](http://www.Turfwerks.com/RainBird/)

S & R TOURNAMENT: JULY 11, 2016 at KANSAS CITY COUNTRY CLUB

# Tournaments and Meetings/Programs Report

By Brent Stephenson, Director

## Joint Meeting

The Joint meeting will be at Falcon Ridge on May 23rd. Andy Klein, CGCS and the team at Falcon Ridge are excited to represent the HAGCSA this year. Don't miss this excellent event.



Falcon Ridge Golf Course

## Superintendent Profile

Andy Klein, CGCS, has been at Falcon Ridge Golf Course since 2013. Prior to working at Falcon Ridge he was Superintendent at Falcon Lake Golf Course in 2012 and Assistant Superintendent at The Kansas City Country Club from 2007-2012.

## Don't Miss Out!

### The Next Event is the Wee One Tournament at Tiffany Greens. Good Luck!

April was a slow month for the Tournament, Meeting and Programs. We know many of our clubs aerate greens and try to catch up with spring duties so we purposely moved the Wee One tournament to May. May is going to be a busy month and we hope all of you mark your calendars for the Wee One, Footprints in Fairways, and Joint Meeting in May.

**Next Up** - We hope to see you all at the Wee One event on May 4th at Tiffany Greens. The Wee One committee has great tournament planned. The Footprints in Fairways event is next on May 16th at Ironhorse Golf Club. Then we want to see everyone represent the HAGCSA in the Joint Meeting at Falcon Ridge.

## Attendance Contest

Don't forget about the attendance contest. Remember, that all HAGCSA members are eligible for this contest. Qualifying events for the HAGCSA ATTENDANCE CONTEST:

- Feb. 23 - Bowling Event at College Lanes
- March 8 - Shop Talk at Deer Creek Golf Club
- May 4 - Wee One at Tiffany Greens Golf Club
- May 16 - Footprints in Fairways at Ironhorse Golf Club
- May 23 - Joint Meeting at Falcon Ridge Golf Club
- July 11 - S&R Tournament at Kansas City Country Club
- August 25 - Past Presidents Fall Classic Event at the T-Bones
- September 15 - Vendor Appreciation at Twin Peaks in Olathe
- November 2 - Annual Meeting at Lake Quivira CC
- December 12&13 - Common Grounds at Olathe CC
- NEW date Jan. 6 - New Year Party at Boulevard Brewery



**Unparalleled weed control.  
Now you have two loyal companions.**

**BAYER**

**Spect(i)cle®**

**Wes Kleffner**  
Area Sales Manager T&O  
(913) 205-5381  
wes.kleffner@bayer.com

**For more information,  
visit [BackedbyBayer.com](http://BackedbyBayer.com)**

Bayer CropScience LP, Environmental Science Division, 2 TW Alexander Drive, Research Triangle Park, NC 27709. 1-800-331-2867. www.BackedbyBayer.com. Bayer, the Bayer Cross, and Specticle are registered trademarks of Bayer. Not all products are registered in all states. Always read and follow label directions. ©2015 Bayer CropScience LP.



# Membership Committee Report

By Cory Henson, Director

**G**reetings from the membership committee. We have been busy so far this year lighting up the phone lines and sending emails to members who have not yet renewed their dues for 2016. As I write this article, I can tell you that all of the members on our outstanding list have received a phone call or email as a reminder. If any current member crosses paths with a past member not wanting to rejoin, please take the time to remind them that the Heart is a great organization.



Soon we will have our final list of 2016 members and will begin working on the roster. Also, we have reached out to most, if not all, nonmembers in our area to share with them the benefits of becoming a member of the Heart, as well as offering an invitation to join.

I would like to extend a big THANK YOU to Kim Weitzel for keeping us informed on all of our renewals and new memberships as they come in. Our positions on the board would not be the same without her help. Once again, if anyone comes across someone in our industry – new or old – please share with them what joining the HAGCSA has to offer, and send them our way.

## Welcome to Our New Members For 2016

**Todd Peterson** - Shadow Glen Golf Club  
**Kevin Raab** - Oakwood Country Club  
**W.J.T. Corvette Way** - Paradise Pointe Golf Complex  
**Brock Wilson** - Mid-America Golf and Landscape, Inc.  
**Cooper Clark** - Deer Creek Golf Club  
**Kirby Joy** - ReeceNichols  
**Nick Laufenberg** - Mules National Golf Club

FOLLOW US ON ...

**twitter**   
**@HAGCSA**



## Your Strongest Supply Link

For over 50 years, Helena has been in the plant protectant and fertilizer distribution business. And now we have our own local fertilizer plant to help address your local fertilizer needs.

Whatever you need—fungicides, herbicides, insecticides, seed, and fertilizers for golf courses—we have it. We also offer proven nutritional products along with others that increase soil water retention.

We want to be your input partner and earn your long-term business. Our goal is to help you achieve professional success with season-long results.



**Aristocracy** **ONDECK** **Renova**

- Preventative & curative for LDS
- Improves wetting of soils with vertical & lateral infiltration
- Promotes healthier soils for high quality turf
- Dual acid technology enhances broadleaf control
- Minimal volatility & no phenoxy odor
- Co-formulated with adjuvant system
- 28% plant derived, L-Amino Acids
- Helps turf recover from stressful conditions
- Increases metabolic activity
- Increases nutrient uptake

First ten people to mention to Brian and John what is different with this ad compared with the previous ad will get a \$30 Tumbler.

**Mark Person**  
816-560-5448

**Brian Ruder**  
913-706-5521

**John Sheehy**  
913-424-6143

**Tyrone Satterfield**  
913-441-0676

**Rick Blasi**  
913-484-7735

Helena & People...Products...Knowledge... are registered trademarks and Aristocracy & On Deck are trademarks of Helena Holding Company. Renova is a registered trademark of Valagro SpA. Always read and follow label directions. © 2016 Helena Holding Company.

**HELENA** People...Products...Knowledge...

**S & R TOURNAMENT: JULY 11, 2016 at KANSAS CITY COUNTRY CLUB**

# Tips for Public Speaking

By Wes Kleffner, Special Director

Presenting in front of groups can be challenging. If you are interested in becoming a more effective communicator, Toastmasters is a great place to start. This organization teaches you the importance of speaking, listening, and thinking.

Toastmasters began as a series of speaking clubs organized by Ralph C. Smedley during his time working for the YMCA (Young Men's Christian Association) in Bloomington, Illinois, United States. As director of education at the YMCA, Smedley saw a need for the men in the community to learn how to speak, conduct meetings, plan programs, and work on committees.

Members learn by studying the manual, practicing, and helping one another. The manual consists of 10 speech projects. Each presentation builds on the previous. You begin with an ice breaker speech based on yourself. Throughout the remaining presentations, you learn the importance of organization, speech purpose, proper word usage, body language, and vocal variety. You also learn how to do research, use visual aids, speak persuasively, and inspire others. All presentations typically last 5 to 7 minutes. Each consists of an introduction, body, and conclusion.

## Using Visual Aids

My favorite speech would be #8 (using visual aids). Visual aids can be very powerful tools. They increase understanding. Most of what we learn is ingested through our eyes. Information presented visually is received and processed by the brain faster than a verbal message. Visual aids can be useful helping the audience understand complex or abstract ideas. On average people tend to remember up to two thirds of what they see and hear two weeks later. People think much faster than you speak. Visuals help keep them focused on your message by adding variety and interest.

How often do you get nervous before speaking? To become an effective speaker you must learn to manage and control this feeling. You must know your material! Practice in front of



a mirror while timing yourself.

Become familiar with the room you will be speaking. Arrive early and stand at the lecture. Set up any visual aids. Test the microphone several times. Walk around the area where the audience will be seated. You must relax. On the morning of a presentation, it's not uncommon for me to run 3-5 miles. Exercise releases tension.

Continued on next page

**For Cushman<sup>®</sup>, it's more than delivering reliable, durable vehicles – its supporting the industry we serve.**

Purchase a Cushman<sup>®</sup> Hauler<sup>®</sup> utility vehicle between January 1, 2016 through December 31, 2016 and Cushman will contribute a \$50 per car donation to the Heart of America Chapter of the Golf Course Superintendents Association.

**LET'S WORK.<sup>®</sup>**

**S & R TOURNAMENT: JULY 11, 2016 at KANSAS CITY COUNTRY CLUB**

# Rounds4Research Committee Report

By Chris Benisch, Director

This year's Rounds4Research auction has come and gone. The auction took place April 1<sup>st</sup> through April 10<sup>th</sup> and as a whole, \$155,330 was raised from all winning bids. Congratulations to all the winning bidders in our area.

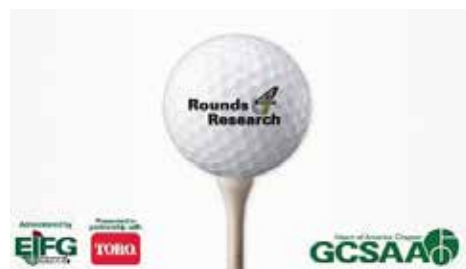


- Sykes/Lady Overland Park Golf Course
- The Lodge of Four Seasons
- Winterstone Golf Course

The HAGCSA would like to thank all of the facilities from our area that participated in the Rounds4Research auction for 2016:

- Adams Pointe Golf Club
- Alvamar Golf and Country Club
- Canyon Farms Golf Club
- Cardinal Hill Golf Course
- Clinton Country Club
- Colbert Hills Golf Course
- Golf Club of Creekmoor
- Deer Creek Golf Club
- Deer Trace Golf Course
- Drumm Farm Golf Club
- Dubs Dread Golf Club
- Eagles Landing Golf Course
- Falcon Lakes Golf Club
- Falcon Ridge Golf Course
- Fred Arbanas Golf Course
- Heart of America Golf Academy
- Hillcrest Golf Club
- Hodge Park Golf Course
- Ironhorse Golf Club
- Kirksville Country Club
- Lake Quivira Country Club
- Leavenworth Country Club
- Country Club of Leawood
- Liberty Hills Golf Club
- Minor Park Golf Course
- Painted Hills Golf Course
- Paola Country Club
- Prairie Highlands Golf Course
- River Oaks Golf Club
- Rolling Meadows Golf Course
- Royal Meadows Golf Club
- Salina Municipal Golf Course
- Shadow Glen Golf Club
- Shawnee Golf and Country Club
- Shoal Creek Golf Course
- Staley Farms Golf Club
- St. Andrews Golf Course
- Swope Memorial Golf Course
- Sycamore Ridge Golf Club

Now that the auction is over, funds raised from the facilities above will come back to the HAGCSA and can be dispersed to nearby universities for turf research, or used to help put on education programs that our association provides to its membership. All winning bids totaled to \$4,655. After the EFIG takes their 20 percent for costs to set up the auction, the HAGCSA will be looking at around \$3,700 from the Rounds4Research auction.



I would like to thank my committee again: Scott Cummins, John Dixon, Brad Lackey, Ethan Shamet and Tim Nielsen, for taking the time out of their busy work and personal schedules to help make this auction a success for the HAGCSA.

## Tips for Public Speaking

Continued from page 10

The ability to think and speak quickly is an important skill. That's why the "Table Topics" piece of each meeting exists. Certain why the "Table Topics" piece of each meeting exists. Certain members of the meeting will be called upon to give one to two minute talks on a topic. You learn how to present your thoughts in a clear, organized manner with minimal preparation.

Toastmasters has a considerable amount of material focused on public speaking. My experience (and this article) is focused on the competent communication program. Program two is more focused on leadership. This path also focuses on a 10 step speech project track. If you are interested in finding a club near you or additional information about public speaking, please visit <https://www.toastmasters.org>.

# PERFECT ATTENDANCE



Since 1933

*Our Mission is to promote the welfare of the game of golf, the science and art of golf course management, the organizational and business effectiveness of the profession, the professional image and well-being of individual members, and to unite golf course superintendents in this area.*

## ~ ATTENDANCE CONTEST ~

The Tournaments and Meetings/Programs Committee is excited to roll out the new “HAGCSA ATTENDANCE CONTEST”. Eligibility is based on the number of qualifying events attended by the HAGCSA Member. All HAGCSA Members are eligible. Those Members with the highest attendance record will be entered into the drawing for the following prizes. The HAGCSA Member must be present at the New Year Party to win.

### PRIZES

- Platinum Prize - HAGCSA Logo Yeti 45 cooler (valued at \$450)
  - Gold Prize - GO PRO Hero camera (valued at \$150)
  - Silver Prize - HAGCSA Logo Yeti Coffee Cup (valued at \$50)
- Total value of prizes is estimated at \$600.00.

There will be a sign-in sheet at the registration table that must be signed to prove registration and attendance at each event. The Tournament and Meetings/Programs Committee will be responsible for keeping records of attendees that are eligible for the award. The HAGCSA board of directors will attest the eligible candidates prior to the drawing at the New Year Party. The eligible HAGCSA Members will be drawn from a hat at the New Year Party. The first person drawn will win the platinum prize, the second person drawn will win the gold prize, and the third person drawn will win the silver prize.

This award will be presented January 13<sup>th</sup> at the Annual HAGCSA New Year Party.

### QUALIFYING EVENTS

- Feb 23 - Bowling Event at College Lanes
- March 8 - Shop Talk at Deer Creek Golf Club
- May 4 - Wee One at Tiffany Greens Golf Club
- May 16 - Footprints in Fairways at Ironhorse Golf Club
- May 23 - Joint meeting at Falcon Ridge Golf Club
- July 11 - S&R Tournament at Kansas City Country Club
- August 25 - Past Presidents/Fall Classic Event at the T-Bones
- September 15 - Vendor Appreciation at Twin Peaks in Olathe.
- November 2 - Annual Meeting
- December 12 & 13 - Common Ground at Olathe Conference Center
- January 13 - New Year Party



# Benefits of HAGCSA Membership

By Chris Benisch, Director

How many of us have contemplated whether or not it is worth being part of a group or association. Is it worth the time, the money or possibly the responsibility that may come with it? I can't answer these questions for you, but maybe I can help tip the scale in favor of why your HAGCSA membership is worth it.



I have only been a HAGCSA member for a little over 4 years now, but I can tell you that without it, I wouldn't be where I am today. The networking possibilities provided with all of the events our association coordinates throughout the year are many. Have a question or issue at your facility, chances are one of your peers has dealt with the same thing, but may have found a better solution. Curious about a new fungicide or herbicide, but your budget may limit your ability to simply purchase and try it, chances are someone else already has and you can find out if it's worth every penny you may need to squeeze out of your budget. Equipment issues, why wouldn't you attend the one free event of the year (Shop Talk), which takes place shortly after or during the time everyone is breaking down cutting units and servicing for next season. At the most recent Shop Talk, Jacobsen, John Deere and Toro

sales representatives were in attendance, why weren't you there if you are dealing with an equipment issue or simply had a question? These are just a few examples of what your membership could provide if you had one.

I hope that many of our more tenured Superintendents or even retired Superintendents that helped make this association what it is today, take the time to read this article. At our most recent board meeting, a discussion came up as to why many of the individuals that made this association as great as it is, have quit showing up to events? The general consensus was that as long as they have been members and taken lead roles in our association, it was time to step aside. I can tell you that we still need your voice and your attendance at our events. Young Superintendents, such as myself, have questions for you. How does this all apply to the importance of membership to our association? If Superintendents aren't attending events, generally your assistants aren't attending events. How are you helping them advance their careers by not making an appearance? We want everyone's membership to benefit them as much as possible during their career, for a new member, it may all start with a simple handshake and introduction with one of their peers.



## Professional Turf Products, LP



### *Toro Triflex*

The all new Greensmaster Triflex takes cutting performance and playability to a whole new level, but it does even more for your bottom line!

This is the new riding greens mower that produces results like a walker!

Please call us for any new or refurbished product, and for your parts and service needs.

1-888-PRO-TURF

[WWW.PROTURF.COM](http://WWW.PROTURF.COM)

[www.facebook.com/proturfprod](http://www.facebook.com/proturfprod)

**S & R TOURNAMENT: JULY 11, 2016 at KANSAS CITY COUNTRY CLUB**

# Scholarship and Research Committee Report

By Matthew Delventhal, Director

The S&R Committee has been working hard towards making this year's tournament a success. We have decided that with this marquee event at The Kansas City Country Club we will be having 4 man teams. The committee has also decided to keep all of the fun games/contests. So please sign your team up for this great event.



I would also like to thank our title sponsor Kansas City Turf Supply. Please thank Greg King and Gary Breshears the next time you see them. We are grateful for their support.

I would also like to thank the other contributing sponsors we have to date: E-Z-Go, Kansas Golf & Turf, BASF, Supreme Turf Products, Floratine Midwest, and Macro-Sorb. We are still accepting sponsorships, so please contact me or Kim Weitzel if you have interest.

After the tournament, we will have our live auction which this year will be bringing back Tanna Guthrie. This auction allows us to raise more funds for scholarships and research. We welcome any donations you may have for the auction. Items do not have to be golf related.

We look forward to seeing everyone at The Kansas City Country Club on July 11th!

## SCHOLARSHIP & RESEARCH TOURNAMENT

### Kansas City Country Club

Host Superintendent: Loren Breedlove

**Monday, July 11, 2016**

9:00am – Registration

10:30am – Shotgun

On the Course – Lunch

3:30pm – Live Auction

4 Person Scramble

\$750 per team; \$200 for singles

~ SUPERINTENDENTS ~

You are encouraged to form a club team with colleagues, members and valued customers from your facility.

TITLE  
SPONSOR:

**K**ansas  
**C**ity  
**T**urf  
**S**upply, Inc.

# Assistant Superintendent Committee Report

By Grant Suderman, Special Director

The 2016 Employee Tournament will be held at Sunflower Hills Golf Course on August 1 @ 1:00. The format is a four-man scramble shotgun start at \$30 per person or \$120 per team. Lunch and two drink tickets along with winning prizes will be provided.

## Assistant Superintendent Program

I'm also excited to announce that on Tuesday, April 26, Helena Chemical Company will be hosting a tour of their facility for the

Assistant Superintendent program. This is a great opportunity to see how chemicals can be blended right here in Kansas City that we rely on in our profession. The facility is located at 8215 Hedge Ln Terrace, Lenexa, KS 66227. Pizza will be provided at Noon at nearby Lake Lenexa's Black Hoof Park off Monticello Road located just south of the Helena Chemical Facility. After lunch we will drive to the facility for the tour.

**Reinders**  
Solutions & Supplies For The Green Industry

**ADVANCED NUTRITION WITH UTE™**  
AVAILABLE EXCLUSIVELY FROM REINDERS

**MAIN EVENT® TURF RESCUE 4-0-1**  
**MAIN EVENT® ROOT PROFUSION 6-0-1**  
**STRESS MASTER™ N-K 12-0-11**

**STRESS MASTER™ Si 0-0-26**  
**MAIN EVENT® FOUNDATION 18-3-4**  
**MAIN EVENT® GRO-CAL MGB 7-0-0**

**Quest** Products

**Dennis Whiteford**  
913.238.0869  
dwhiteford@reinders.com

**Scott Wilcox**  
816.977.9853  
swilcox@reinders.com

**Mike Maas**  
913.217.0650  
mmaas@reinders.com

150 Reinders

19942 W. 162nd Street, Suite D, Olathe, KS 66062

**S & R TOURNAMENT: JULY 11, 2016 at KANSAS CITY COUNTRY CLUB**

# JOINT MEETING with Kansas GCSA

**DATE:** Monday, May 23, 2016

**LOCATION:** Falcon Ridge Golf Course  
20200 Prairie Star Parkway, Lenexa, KS 66220

**HOST SUPERINTENDENT:** Andy Klein, CGCS

**SCHEDULE:** 11:00am – Registration & Lunch  
11:45am – Meeting/Program  
1:00pm - Shotgun  
Following – Awards (1<sup>st</sup>, 2<sup>nd</sup>, 3<sup>rd</sup> Places and Contest Holes)

**COST:** \$60 per person (Lunch Only: \$25)

**SPEAKER/TOPIC: "Turfgrass Research and Extension Updates"**  
with Dr. Jared Hoyle, Assistant Professor, Extension Turfgrass Specialist, Kansas State University  
(CEUs Applied For)

**DRESS CODE:** Country Club Attire (Collared Shirts, No Jeans or Cargo Pants). Please clean your soft spikes.

**FORMAT:** 2 man shamble; Two/HAGCSA vs Two/KGCSA

**RESERVATIONS:** Mail, Fax or Email Reservation no later than Wednesday, May 18.



*Promoting the welfare of the game of golf, the professional image and well-being of individual members, and to unite golf course superintendents in the Kansas City area.*



**Yes, I/we plan to attend the Joint Meeting with Kansas GCSA!**

Player(s): \_\_\_\_\_ Company: \_\_\_\_\_ Handicap: \_\_\_\_\_  
\_\_\_\_\_  
\_\_\_\_\_  
\_\_\_\_\_

CONTACT: \_\_\_\_\_

COMPANY: \_\_\_\_\_

PHONE: \_\_\_\_\_ EMAIL: \_\_\_\_\_

**PAYMENT:**

Check Enclosed     Invoice(\*)     Credit Card: No.: \_\_\_\_\_  
Exp: \_\_\_\_\_ Security Code: \_\_\_\_\_  
Name on Card: \_\_\_\_\_

(\*)By indicating you wish to be invoiced, you agree to pay total invoice **upon receipt**. Invoices will be sent electronically when an email is provided.

Complete Form and Mail, Fax or Email no later than **Wednesday, May 18** to:  
Heart of America Golf Course Superintendents Association  
P.O. Box 419264 . Kansas City . Missouri . 64141; 816-561-5323 . 816-561-1991/fax . www.hagcsa.org

**Refund Policy:** Full refund with a 72 *business hour* notice; 50% refund with a 48 *business hour* notice; no refund within 24 hours of event start time. "No Shows" will be billed.

**Cancellation Policy:** The Heart of America GCSA reserves the right to cancel any event not meeting the minimum requirements.





**WEE ONE GOLF OUTING  
AT TIFFANY GREENS GOLF CLUB  
IN HONOR OF MARK PIERCE  
Wednesday, May 4, 2016**



5900 NW Tiffany Springs Parkway,  
Kansas City, Missouri  
Host: Randy Cox, Superintendent

**\$100 Per Player / \$400 Per Team - Four Person Scramble**

**REGISTRATION DEADLINE: April 22, 2016**

**Great Golf Prizes**

**On Course Refreshments**

**Lunch on the Course at the Turn**

**Enter Early - Field is Limited to 30 Teams (120 Players)**  
Country Club Attire Required - Collared Shirts, Soft Spikes Only

8:00am - Registration - Driving Range Available  
9:00am - Golf Shotgun  
2:00pm - Prizes, Hors D'oeuvres Reception & Cash Bar  
2:30pm - Silent Auction

**Pro Shop Certificates for:**

**1<sup>st</sup> Place: \$600      2<sup>nd</sup> Place Draw: \$400      10<sup>th</sup> Place Draw: \$300      18<sup>th</sup> Place Draw: \$300**

**Skins Game: \$20 Per Team**

**Mulligan Purchase: 4 for \$20 or 8 for \$40**

**Hole in One Contest**

-----Please Fill Out Completely - Dinner Count is Important-----

Name: \_\_\_\_\_ Course/Company: \_\_\_\_\_  
Name: \_\_\_\_\_ Course/Company: \_\_\_\_\_  
Name: \_\_\_\_\_ Course/Company: \_\_\_\_\_  
Name: \_\_\_\_\_ Course/Company: \_\_\_\_\_

Register: \_\_\_\_\_ Golfer(s) @ \$100 Per Player / \$400 Per Team (Golf, Prizes, Reception)

Register: \_\_\_\_\_ Person(s) for Dinner Only (\$50)

Total Enclosed: \$ \_\_\_\_\_

Payment Method:  Check  Visa  MasterCard  Discover

Name as it appears on credit card: \_\_\_\_\_

Credit Card Number: \_\_\_\_\_ Expiration Date: \_\_\_\_\_ Security Card \_\_\_\_\_

Authorized Signature: \_\_\_\_\_

**Make checks payable to Wee One - Mail to: 11855 Archer Avenue, Lemont, IL 60439 (Do Not Send Cash)**

**Registration Available Online at:**  
[www.weeone.org](http://www.weeone.org)

**For more information, please contact:**  
Duane Sander: 816-695-5908 / [duanesander@aol.com](mailto:duanesander@aol.com)



**WEE ONE GOLF OUTING  
IN HONOR OF MARK PIERCE  
Wednesday, May 4, 2016  
Tiffany Greens GC Kansas City, MO**



On May 4, 2016, The Wee One Foundation will hold our third annual Wee One Golf Outing in Honor of Mark Pierce. This year's outing will be hosted by Tiffany Greens Golf Club in Kansas City, Missouri.

The Wee One Foundation was established to financially assist national golf course industry professionals and their families who have suffered a catastrophic illness and are in need financial assistance. It is because of your generosity that the Wee One Foundation has distributed over \$850,000 to families in need.

In 2014 the foundation donated \$10,000 to support local cancer victim, and Superintendent at Tiffany Greens, Mark Pierce. Please join us in continuing to support the Wee One Foundation, and paying it forward to others by sponsorship.

**Please register me as a:**

**Platinum Sponsor: \$1,500**

- Includes entry fee for one foursome
- Company or individual name on main signage and at reception
- Recognition as a Platinum Sponsor during the award presentation

**Gold Sponsor: \$750**

- Includes entry fee for two players
- Recognition as a Gold Sponsor during the award presentation

**Food & Beverage Sponsor: \$500**

- Company or individual name signage at your station
- Opportunity to greet event participants on the golf course
- Recognition as Food/Beverage Sponsor during award presentation

**Par 3 Hole-In-One Sponsor: \$500 (4 available)**

- Company or individual name signage at Par 3
- Seating opportunity to greet event participants on the tee
- Recognition as a Par3 Sponsor during award presentation

**Tee Sponsor: \$200**

- Company, individual or family to be recognized with signage posted on tee box
- Recognition as a Tee Sponsor during award presentation

**Silent Auction Sponsor:**

- Donate an Item you think will draw interest from the attendees
- Recognition of your gift at the silent auction

Name: \_\_\_\_\_ Course/Company: \_\_\_\_\_

Payment Method:  Check  Visa  MasterCard  Discover

Name as it appears on credit card: \_\_\_\_\_

Credit Card Number: \_\_\_\_\_ Expiration Date: \_\_\_\_\_ Security Card: \_\_\_\_\_

Authorized Signature: \_\_\_\_\_

**Make checks payable to Wee One Foundation**

**For more information, please contact:**

Duane Sander: 816-695-5908 / [duanesander@aol.com](mailto:duanesander@aol.com)

# Footprints – iN – Fairways Pro Am



benefiting



In 2006, the Kansas City Golf Alliance was formed to “bring together” all four associations (PGA, GCSAA, CMAA and KCGA) for the purpose of better communications and educational opportunities. The alliance has been silent for many years; however, now more than ever these associations need to work together on various issues, most notably – Growth of the Game.

The Footprints iN Fairways event is a cooperative effort between the Midwest Section PGA and the Heart of America GCSA, to educate and/or update all in attendance regarding the SNAG–iN–School program, as well as a fundraiser for.

**Date:** May 16, 2016  
**Venue:** Ironhorse Golf Club  
**Time:** 11:00 Registration  
12:00 Lunch  
1:00 Shotgun  
**Cost:** \$100 per player

## Format

**Scramble Format**

**Places – 1st through 3rd**

**Team – 2 Options:**

1. 1 PGA, 1 GCSAA and 2 others
2. Form Your Own Team of 4

**Limited to (30) Teams**



JOHN DEERE

- All players receive tee gifts and food & beverage
- Hole Contests and Prizes
- All GCSAA members receive a “bonus” gift.

If you have questions on the registration process, please contact Shannon at 816-229-3362 or [sjohnson@pgahq.com](mailto:sjohnson@pgahq.com)





**FOOTPRINT iN FAIRWAYS  
Golf Tournament**

**Ironhorse Golf Club**

**May 16, 2016**

**RETURN FORM TO:**

Midwest Section PGA  
1960 NW Copper Oaks Circle  
Blue Springs, MO 64015  
Fax: (816) 229-9644



**REGISTRATION INFORMATION:**

PGA Professional: \_\_\_\_\_

Super Name: \_\_\_\_\_

Amateur 2: \_\_\_\_\_

Amateur 3: \_\_\_\_\_

**ENTRY FEE:**

Professional: \$100

Amateur: \$100 per

Team: \$400

**PAYMENT INFORMATION:**

Make Checks Payable to: **Midwest Section PGA  
Foundation**

**Credit Card Information:**

Amount to be charged: \_\_\_\_\_

Name on Card: \_\_\_\_\_

Card Type (circle one): American Express Visa Mastercard

Card #: \_\_\_\_\_

CVS #: \_\_\_\_\_

Exp Date: \_\_\_\_\_

**Date:** Monday, July 11, 2016

**Location:** Kansas City Country Club  
 6200 Indian Lane  
 Shawnee Mission, KS 66208

**Host Superintendent:** Loren Breedlove

**Schedule:** 9:00am - Registration  
 10:30am - Shotgun  
 On the Course - Lunch  
 3:30pm - Live Auction & Food/Beverages

**Format:** Four-person scramble

**Cost:** \$750 per team; \$200 per single  
*Encouraged to sign-up as a team.*

**Dress Code:** Country Club Attire - Collared Shirt, **Crew Length Socks**, Soft Spikes and No Jeans/Cargo Pants.

**Donation:** Please help us reach our fund-raising goal by donating additional funds. Our long-term goal is to raise enough money to allow us to fund an entire research project relevant to golf courses in our region. Your generous help is key to attaining this goal.



**Reservation Deadline: Monday, June 27, 2016**

**YES! We plan to attend the S&R Tournament:**

Player: _____	Club/Company: _____
Player: _____	Club/Company: _____
Player: _____	Club/Company: _____
Player: _____	Club/Company: _____

**GAMES/CONTESTS** (Encouraged to sign-up now to reduce your time in line. We can invoice separately if needed):

- Skins Game - \$25 per team (half the pot goes to the skins winner, the other half goes to the S&R Fund)
- Bubba Watson Hole - \$25 per team. Your team is given a 350+ yard drive. – Hole #8
- Hole in One Opportunity - \$25 per team. You receive a hole-in-one if anyone in your group lands on the green. – Hole #14
- Mulligans - \$25 per team. One mulligan per player.
- 50/50 Pot - \$1 per ticket (half the pot goes to the ticket winner; the other half to the S&R Fund): \_\_\_\_\_ # of tickets requested.
- Additional Donation to S&R Fund: \$\_\_\_\_\_ (Thank You!)  
 (Note: You will also have the opportunity to pay for these games/contests the day of the event.)

Submitted by: \_\_\_\_\_ Club/Company: \_\_\_\_\_

Full Address: \_\_\_\_\_

Cell #: \_\_\_\_\_ E-mail: \_\_\_\_\_

*NOTE: If a cancellation occurs due to the weather, the "submitted by" contact will be notified. It will then be that person's responsibility to notify the remaining players on the team listed above.*

**PAYMENT:**

Check Enclosed  Invoice (By indicating you wish to be invoiced, you agree to pay total invoice upon receipt.)

All "No Shows" will be billed. You may cancel without penalty 72 business hours prior to event registration time.

# S&R SPONSORSHIP FORM

## July 11, 2016 at Kansas City Country Club

"Organize and generate the financial means to enrich the game of golf through funding regionally based research and scholarship to qualified applicants."



The HAGCSA's Scholarship and Research Tournament is considered our most important function of the year. This tournament is the pinnacle of our fund raising endeavors and provides the optimum opportunity to have your company's name honored and recognized by our membership for your support of this well-attended event.

### Title Sponsorship - \$2,500 (1-TAKEN; 0-AVAILABLE)

- Company name and logo recognition on main signage at the registration table.
- Prominently displaying of your firm's name and logo in all lunch and meeting areas.
- Name recognition on all tournament material (i.e. rules sheets, sign-up sheets, etc.)
- Complementary entry and lunch for a four-some in the tournament.
- Verbal recognition as title sponsor by speakers during lunch and award presentations as a key component to the success of this event.
- Recognition in *Heartbeat* publication.



### Food Sponsors - \$750 (3-TAKEN; UNLIMITED AVAILABLE)

- Verbal recognition as the benefactor during lunch and the awards ceremony.
- Company name on signage at the buffet table and on table tents positioned around the room.
- Firm's name recognition on the main banner at registration table with other participating sponsor
- Verbal recognition for your company.
- Recognition in *Heartbeat* publication.



### Beverage Stations - \$500 (5-TAKEN; 0-AVAILABLE)

- Sponsorship of one of the four on course beverage stations that are positioned around the golf course.
- Perfect opportunity to greet event participants on the golf course and get your name out there as an important contributor to the success of the event.
- Company name on signage at the beverage station you are assigned.
- Name recognition on the main banner at registration table with other participating sponsors.
- Recognition in *Heartbeat* publication.



### Tee/Green Sponsorships - \$300 (UNLIMITED AVAILABLE)

- Affords your company to be recognized by each player with signage posted prominently on an assigned tee box.
- Company name will be displayed with other important affiliate partners on the main banner located at registration table.
- Recognition in *Heartbeat* publication.

## YES! Count us in to Support HAGCSA Scholarship & Research Efforts!

Company: \_\_\_\_\_

Contact Name: \_\_\_\_\_

Full Address: \_\_\_\_\_

Phone: \_\_\_\_\_ E-mail: \_\_\_\_\_

### PAYMENT:

Check Enclosed  Invoice (\*)

(\*)By indicating you wish to be invoiced, you agree to pay total invoice upon receipt. Invoices will be sent electronically when an email is provided.

**RETURN COMPLETED FORM BY Monday, June 27, 2016**

HAGCSA • P.O. Box 419264 • Kansas City, Missouri 64141 • FAX to 816-561-1991

If you have questions, please contact Kim Weitzel at 816-561-5323.

# S & R Auction Donation Form

Monday, July 11, 2016

Kansas City Country Club – Shawnee Mission, Kansas



The S & R Golf Tournament and Auction was developed to fund scholarships for turfgrass students, assist members' employees with continuing education expenses and support turfgrass research. Please help us provide this assistance, and to make a greater impact on the lives of those who will be the future of our industry.

The HAGCSA S & R Committee will again sponsor our annual fund raising auction to be held during the S & R Tournament at Kansas City Country Club. It's a fun opportunity to give something to your industry partners, or share a personal treasure with your friends in your industry. Donate an item that you think will draw some interest from among the HAGCSA members. Ideas include equipment, autographed memorabilia, artwork, vintage wines, golf clubs, electronics . . .you name it! The more unique, the more it could bring in for the S & R program. Last year we raised \$10,000 and we hope to beat that record in 2016. Please help us to accomplish that goal!

Please join the efforts to raise money for the S & R program by completing the form below and returning it to the Association office on or before **Monday, June 27, 2016:**

We **Thank You** in advance for your support!

-----  
Name \_\_\_\_\_

Company Name \_\_\_\_\_

Full Address \_\_\_\_\_

Contact Phone \_\_\_\_\_ E-mail \_\_\_\_\_

Your donation(s) will be listed to the membership prior to the event and listed on the auction program. Please provide the following information to help promote the live auction:

Item Donating \_\_\_\_\_ Estimated Value: \$ \_\_\_\_\_

Description \_\_\_\_\_

Item Donating \_\_\_\_\_ Estimated Value: \$ \_\_\_\_\_

Description \_\_\_\_\_

Item Donating \_\_\_\_\_ Estimated Value: \$ \_\_\_\_\_

Description \_\_\_\_\_

*\*\*\*You will be responsible for bringing the item(s) to the Association Office by Monday, June 27, 2016, or providing a certificate and appropriate picture representing the donated item(s).*

If you have any questions regarding the auction process or event, please feel free to contact  
Kim Weitzel at the Association Office: 816-561-5323.

# Vendor Directory



## **BASF**

Cozette Hadley  
515-231-1347

## **Bayer Environmental Science**

Wes Kleffner  
913-205-5381

## **B.W.I. Companies**

Tom Campbell  
800-247-4954

## **E-Z-Go Golf Carts**

George Hobbs  
913-515-9877

## **Helena Chemical Company**

John Sheehe  
913-441-0676

## **Herfort Norby Golf Course Architects**

Kevin Norby  
952-361-0644

## **PBI Gordon**

Heath Schesser  
816-460-6216

## **Professional Turf Products**

Brad Davisson  
913-449-8238

## **Reece Nichols**

Kirby Joy  
816-344-1893

## **Reinders, Inc.**

Mike Maas  
913-217-0650

## **Select Turf, Inc.**

Jim Keeven  
573-634-3444

## **SiteOne Landscape Supply**

Ken Harding  
913-208-6546

## **Supreme Turf Products**

Mike Kipper  
913-829-3611

## **Todd Valley Farms**

Wayne Thorson  
402-624-6385

## **Turf & Soil Diagnostics**

Sam Ferro  
855-769-4231

## **Turkwerks, Inc.**

Brian Freeman  
913-530-4729

## **Urban Tree Specialists**

Bret Cleveland  
816-214-8327

*2016 Heartbeat  
Advertisers*



Name \_\_\_\_\_ GCSAA Membership #: \_\_\_\_\_  
 Club or Company \_\_\_\_\_  
 Address \_\_\_\_\_  
 City \_\_\_\_\_ State \_\_\_\_\_ Zip \_\_\_\_\_  
 Phone \_\_\_\_\_ Fax \_\_\_\_\_  
 E-mail \_\_\_\_\_ Spouse's Name \_\_\_\_\_

Check here if you wish to receive your mailings at home.

Home Address: \_\_\_\_\_ City \_\_\_\_\_ St \_\_\_\_\_ Zip \_\_\_\_\_

## JOB INFORMATION: LIST CURRENT EMPLOYMENT FIRST

DATES EMPLOYED		EMPLOYER NAME & CITY/STATE	TITLE
From _____	To _____	_____	_____
From _____	To _____	_____	_____
From _____	To _____	_____	_____

I hereby make application for membership in the Heart of America Golf Course Superintendents Association and attach herewith my dues for the current year. If accepted, I agree to uphold the by-laws of this Association and subscribe to the following code of ethics. To the end that confidence and respect may be enjoyed by members of our Association, the code of ethics is promulgated and observation of its provisions required.

- Every member shall take pride in his/her work and regard it as a profession in which all members strive to maintain its good name.
- Realizing that the best asset that a member can have is thorough knowledge of his/her business, he/she shall constantly try to improve his/her knowledge and effectiveness by freely exchanging experiences and ideas with fellow members and take advantage of all opportunities for improvement.
- He/she shall endeavor to maintain courteous relations with his/her employer and his/her associates and endeavor to have his/her employees take pride in doing their work well.
- In accomplishing his/her own and the Association's best interest, observance of the following suggestions are recommended.
  - **Seeking Employment:** 1. Seek counsel of local associations when applying for a position in a new district; 2. Recommend only qualified GCSAA members; 3. Ascertain the wage scale in the district in which you are seeking employment, then uphold that talk with the person who last held or now holds the position of Golf Course Superintendent.
  - **Visiting:** 1. Announce your HAGCSA or GCSAA membership when visiting; 2. Always contact the Superintendent of the course you are visiting; 3. Honor requests for technical help from golf courses only when channeled through the Superintendent of the course making the request.

**Communication Consent:** I agree to receive notices, advertisements, announcements, brochures, and other information from Heart of America Golf Course Superintendents of America via facsimile, telephone or e-mail. I further agree that my express permission to fax, telephone or e-mail me such notices and other information will continue and have no date of expiration, unless a written request is received indicating a change in permission.

**ATTESTED:** The applicant must be attested by two Heart of America GCSA members.

Attested \_\_\_\_\_ Date \_\_\_\_\_

Attested \_\_\_\_\_ Date \_\_\_\_\_

Applicant's Signature \_\_\_\_\_ Date \_\_\_\_\_

**Please include Annual Membership Dues with Application (Term: January to December):**  
 Superintendents/\$130 - Assistant Superintendents/\$70 - Supplier/\$130 - Golf Course Employees/\$70 - Student/\$25

### Heart of America Golf Course Superintendents Association

P.O. Box 419264 • Kansas City, MO 64141-6264 • 816-561-5323 • Fax 816-561-1991 • www.hagcsa.org