

The Heart of America GCSA is formed to promote the welfare of the game of golf, the professional image and well-being of individual members and to unite industry professionals in the area.

Since 1933

Environmental
Institute for Golf
Governor's Club



Heart of America Chapter

GCSAA

Golf Course Superintendents Association of America

Heart Beat

September 2021

CALENDAR OF EVENTS

September 20

Shop Talk
at Wolf Creek Golf Links

September 23

Vendor Appreciation
at Sunflower Hills Golf Course

October 4-5

Fall Out Tournament
at Osage National Golf Club

October 25

Battle of the Heart Tournament
at Ironhorse Golf Course

November 3

Annual Meeting
at 180 Room

December 13-14

Common Ground
at Olathe Conference Center



Heart of America GCSA
10100 N Ambassador Dr
Kansas City, MO 64153
816-561-5323
www.hagcsa.org

[Click to Register](#)

VENDOR APPRECIATION



Since 1933

Our Mission is to promote the welfare of the game of golf, the science and art of golf course management, the organizational and business effectiveness of the profession, the professional image and well-being of individual members, and to unite golf course superintendents in this area.

Come show your appreciation to our vendors that have supported HAGCSA throughout the year. We couldn't have done it without them! **This Event is Open to the Entire Membership.**

DATE: Thursday, September 23, 2021

SCHEDULE:

4:00pm – 6:00pm: Enter to Play in Horserace, Closest to the Pin Contest (\$5 per shot; unlimited), Food, Beverages, and Yard Games.
6:00pm: Horserace (Top Three Vendors vs Top Three Others)

LOCATION: Sunflower Hills Junior Golf Course
(Adjacent to the George Meyn Building)

COST: Vendors - FREE of Charge

Superintendents, Assistants, Equipment Managers - \$20 per person
(Includes: food, drinks, yard game entry, prizes for top-three)

RULES & INFORMATION:

- One Person will be eliminated every hole by either highest score or by losing chip off in a tie.
- Longest distance will be 100 yards.
- Balls Provided.
- Bring Your Own Clubs or they can be provided "if" needed.

REGISTER ONLINE: <https://web.hagcsa.org/events/Vendor-Appreciation-2053/details>

Questions: Call Kim Weitzel at 816-561-5323; kweitzel@westerneda.com



President's Message



Dear Heart Members,

As I write this article, I think of our members and how the weather plays a huge role in our careers. This year has been a roller coaster of weather starting in June with what seemed like July weather, July started off good but finished with a tough hot dry stretch, now we are looking to August and hoping for good weather to prepare our courses for September, the best month of golf weather we have in this region.

Rounds 4 Research - Thank you to Matt Gourley and the course donations for successfully raising the most money ever in the 2021 HAGCSA Rounds 4 Research campaign. Thirty-nine rounds were donated raising \$7,411.20.



Brent Stephenson,
Great Life Golf

S&R - Thank you to Spencer Roberts, Host Superintendent, and Darin Pearson, Chairman, for another successful Scholarship and Research tournament at Canyon Farms Golf Club. The course was great and our members were able to enjoy some networking and fun while raising money for a great cause. We have a very busy fall in store for everyone. We are anticipating record turnouts and look forward to seeing all of you soon.

Tournaments and Programs - We are working hard to finalize details of our tournaments and programs lineup. Our director Chris Benisch stepped down as he accepted a position with BWI and was no longer eligible to serve our board. We thank Chris for helping us navigate the difficult covid era. His leadership offered the best events and programs possible given the difficult landscape. We are excited to have Mitch Bradberry from Falcon Lakes Golf Course, step in to help us finish the event lineup this year. Mitch is finalizing a vendor appreciation event at Sunflower Golf Course, where Jonathan Bennett, Host Superintendent, and Mitch have a fun event in the works. Also, Mitch is working with Bill Irving to offer a Shop Talk event at Wolf Creek Golf Links; where we can showcase a fall cultivation theme including equipment from many vendors. Stay tuned for details and we hope to see you there.

Battle of the Heart - We are excited for the Battle of the Heart event at Ironhorse Golf Club on October 25th. TJ Ridge, Chairman, has prepared another great event at one of Kansas City's best courses. This event has become one of our most popular events on the schedule and we expect to see a great turnout; where I am sure James Kennedy, Host Superintendent, will have the course in terrific condition.

The Fall Out - Mark your calendars for the Fall Out event at the Lake of the Ozarks, October 4-5, 2021. Richard Shumate and Matt Delventhal continue the rich tradition of a great event offering at one of the top courses at the lake. Jeff Sommerer and the Osage National Golf Course staff are excited to host another event.

Common Ground - Spencer Roberts, Chairman, and the Common Ground committee have prepared a solid lineup for the education conference. This is one of the most important events of the year for the Heart. We put a lot of work into it and the profit goes to support our association. We were proud to be able to offer the virtual conference last year, but the feedback from our vendors and

Enhancing Communications – “OPT IN”

As a way to enhance our communication with members, we are introducing an optional text messaging program. Participants will receive key information about happenings at the association, deadline reminders, and possibly a survey or two. The program is completely optional and you may opt out at any time.

**TEXT
HAGCSA
to 71441**
to sign up for Heart of America
GCSA mobile alerts.



Continued on next page

President's Message - cont.

members was to return to in-person networking and education if local regulations allow it. We are moving forward with a full in person conference and we are excited! I want to thank our HAGCSA board of directors. They have all worked especially hard this year to help the HAGCSA navigate the difficult challenges of the pandemic. We are committed to offering the best services to our members. We use our mission statement as our guiding light to make the best decisions for our association. HAGCSA mission statement, "To promote the welfare of the game of golf, the professional image & well-being of individual members & to unite industry professional in the area." We are steadily returning to normal and thinking of new ways to improve our events, services, and member satisfaction. Lastly, I want to thank each of our HAGCSA members for supporting us and the association. It is very satisfying to see our events full again and our members participating in the networking opportunities. We have a very strong association filled with the top professionals in the industry and it makes me proud to serve as your President.

Brent Stephenson, President HAGCSA



DATE: Monday, September 20, 2021

TIME: 9:00am/Registration
9:30am/Field Demonstrations (Drill & Fill / DryJect
10:30am/Various Cultivation Equipment Demos

LOCATION: Wolf Creek Golf Links (Maintenance Shop)
14765 W. 183rd Street, Olathe, KS 66062

COST: **FREE** of Charge

TOPIC: Aerification Demonstrations and Practices

REGISTER ONLINE: <https://web.hagcsa.org/events/SHOP-TALK-3054/details>



SEPTEMBER 20, 2021

TITLE SPONSORS



Member Profile

Between the Tees With Shane Pokorney

Equipment Manager, Colbert Hills Golf Course

• Briefly tell us about your family and where you are from?
I grew up in Wellsville Kansas, lived there through high school. I lived in Manhattan Kansas for four years. After graduating college my wife and I bought a house in Rossville Kansas where we currently live.

• What are your hobbies and things you like to do away from work?
Hobbies that I enjoy are hunting, fishing and traveling to national parks and new places with my wife. I also spend time in the colder months milling wood and building furniture.

• How and why did you choose to get into the golf course equipment maintenance business?
While attending Kansas State University in 2013 I started working on the grounds crew at Colbert Hills. The current equipment manager was moving and they needed someone to fill his spot. With little knowledge of turf equipment maintenance at the time I decided to give it a shot and ended up really enjoying it.

• Tell us about your education, where else you've worked and how long you've been in your current position.
I attended Kansas State University from 2014-2017 receiving a bachelors degree in Wildlife and Outdoor Enterprise Management. In 2017 I accepted a six month internship at a hunting ranch near Springfield Missouri. I started working at Colbert Hills in 2013 and have been there since with the exception of my six months in Missouri. I have worked at Colbert Hills for eight years. Through high school I worked for a landscape and lawn care company and also did farm work in the summer.



• If you could build a new maintenance building, what would you like included that you wish you had now?
I would build an indoor wash station with a heated pressure washer. Nobody likes dirty equipment.

Continued on next page

COMMERCIAL TURF SERVICES

Authorized Contractor / Distributor

* *Root Pruning*

* **Verticutting and Frazee Mowing Services**

* *Custom Deep or Shallow Aeration Services*

* *Overseeding & Interseeding Services For Greens / Tees / Fairways / Roughs*

* *Topdressing*

www.commercialturfandtractor.com

800-748-7497

Cell: 816-665-6207

Bryan Wood

Agronomist / Turfgrass Specialist

Serving the Turfgrass Industry Since 1982

Between the Tees
Continued from page 4

• **What would be your dream job? Why?**

One thing you wish you had more time to do. Wood working. There is a lot of things on my list of stuff to build but never enough time.


• **If you could travel anywhere on vacation, where would it be?**

My idea of a perfect vacation would be moose hunting in Alaska. I've been to over 40 states and the majority of the country and Alaska would be the first place I'd return to.

• **Favorite adult beverage, college sport/team and pro team?**

It's a toss up between a good bourbon and an ice cold Natural Light. Which is why I'd recommend to just drink them at the same time. K-State everything for college sports. Pro sports I am a life long New York Yankees and Dallas Cowboys fan. Lots of haters for my choice teams but I am used to it by now.

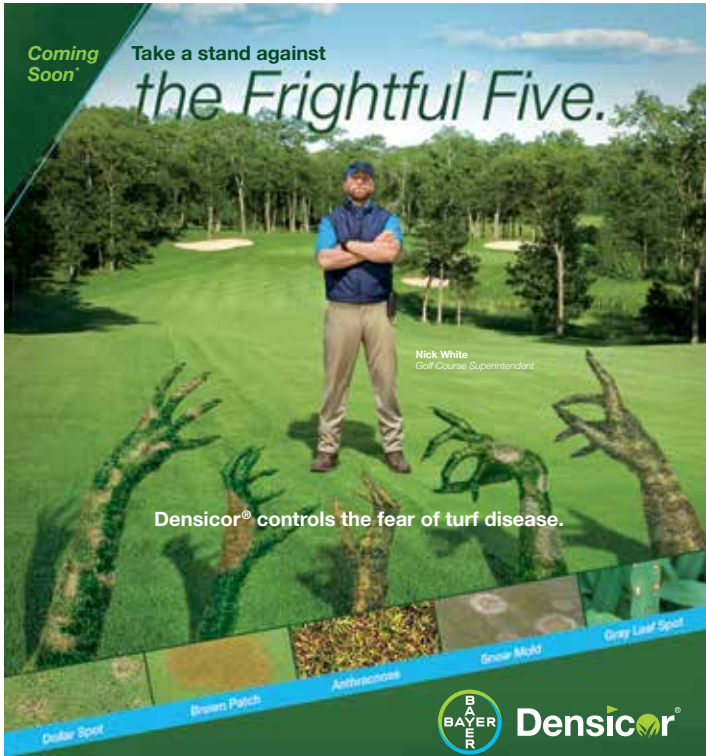
FOLLOW US ON ...



@HAGCSA


Coming Soon

Take a stand against **the Frightful Five.**



Nick White
Golf Course Superintendent

Densicor® controls the fear of turf disease.



Densicor®

Introducing your new advantage against the top five most notorious turf diseases.** Densicor® is the ultimate defense against dollar spot, brown patch, anthracnose, snow mold, gray leaf spot and other harmful diseases. Its ultra-low use rate, affordability and strong turf safety profile allow you to spray less while protecting more acres in any climate. Stand up to the Frightful Five with Densicor for exceptional disease control and excellent turf safety across greens, fairways and tees.

Start protecting your turf against the Frightful Five by visiting es.bayer.us/Densicor or by contacting your area sales manager: **Wes Kieffner** | 913-205-5381 | wes.kieffner@bayer.com

*Densicor recently received federal registration and will be available for purchase this summer.
**Dollar spot, brown patch, anthracnose, gray leaf spot and snow mold were the five most common diseases according to a national survey among golf course superintendents.

ALWAYS READ AND FOLLOW LABEL INSTRUCTIONS
Bayer Environmental Science, a Division of Bayer CropScience LP, 5000 CentreGreen Way, Suite 400, Cary, NC 27513. For additional product information, call toll free 1-800-351-2887, www.environmentalscience.bayer.com. Not all products are registered in all states. Bayer, the Bayer Cross and Densicor are registered trademarks of Bayer, ©2014 Bayer CropScience LP.

DryJect®



The revolutionary DryJect service is now even more flexible. Our most recent innovation allows you to use dry sand OR wet sand and achieve the same remarkable results.

Wet Sand, Damp Sand,
Dry Sand, No Problem



Cost Savings
Opportunities Now
Available

Rain or Shine
Capabilities



Injection that Aerates,
Toppdresses, and
Amends in One Pass

DryJect® will no longer be limited to the use of only kiln dried sand!

Through extensive Research and Development, we have engineered a special hopper configuration that includes rotating agitation and staged screening with vibratory assistance to assure affective flow of anywhere from slightly damp sand to wet sand.

In The Field!



Jim Naudet naudetjim@gmail.com HEARTLAND GOLF AND TURF, LLC (913) 927-9738

Water in Turfgrass: Functions, Flow and Forms

By Tom Samples, Ph.D.; John Sorochan, Ph.D.; and Alan Windham, Ph.D. - May, 2021

Water is essential to growing high-quality turf, but how, exactly, does water “work” within turf? Here is an overview of the water-turf interplay that makes golf’s playing surfaces possible.



Buffering the plant against temperature fluctuations, maintaining plant structure and facilitating photosynthesis are among the roles water plays in a single blade of turfgrass. Photo by Aaron Burden/Unsplash

Editor’s note: A version of this article first appeared in Tennessee Turfgrass, the official publication of the Tennessee Turfgrass Association.

It is estimated that water makes up about 71% of the Earth’s surface and that 96.5% of all the Earth’s water is salt water contained in the oceans. Only an estimated 3.5% is fresh water, 69% of which occurs as ice in glaciers and ice caps. Slightly more than 0.7%, or 8.6 million acre-feet, of the Earth’s fresh water occurs as groundwater and in rivers, lakes and streams.

What follows is a summary of how this valuable resource functions and flows within turfgrass, making recreational surfaces and the other functional, environmental and aesthetic benefits of turfgrass possible.

How Water Functions in Turf

Water is essential for seed germination and plant growth, and it usually makes up 75% or more of the fresh weight of actively

Continued on page 8

CAN WE IMPROVE ON #1?

WE CAN. AND WE DID.

For more information contact Heath Schesser at hschesser@pbigordon.com.

pbi/gordon corporation
Employee-Owned

LEGACY SCHOLARSHIP

funded by
Heart of America Chapter
GCSAA

The Heart of America GCSA Legacy Scholarship Award offers educational aid to the *children and grandchildren of HAGCSA members*. **An Award of \$2,000 is sponsored by the Scholarship & Research funds of the Heart of America GCSA.** The award is administered by the Heart of America Board of Trustees. Applications will be reviewed by an independent committee consisting of three high school educators or three college administrators. All decision of the committee will be final. Applicants will be notified of their status by mail. All scholarship award checks will be made payable to the applicant and his/her educational institution. If you are interested, you may obtain an application from the HAGCSA website: www.hagcsa.org/scholarships or by calling the Association Office at 816-561-5323. **Deadline is October 31, 2021.**

Previous Scholarship Recipients

YEAR	RECIPIENT	SON/DAUGHTER OF:
2020	CARTER MELCHIOR	Doug Melchior, City of Overland Park
2019	CAYLEE IRVING	Bill Irving, Wolf Creek Golf Link
2018	CARMAN STEPHENSON	Brent Stephenson, GreatLife Golf
2017	GRANT NAUDET	Paul Naudet, The Club of Porto Cima
2016	SEAN NAUDET	Paul Naudet, The Club of Porto Cima
2015	EMILY JOHNSON	Scott Johnson, CGCS, Shadow Glen, The Golf Club
2014	TESSA DAVIDS	Paul Davids, CGCS, Sycamore Ridge Golf Course
2013	BENJAMIN NAUDET	Paul Naudet, Club of Porto Cima
2012	CODY SANDER	Duane Sander, CGCS, Shoal Creek Golf Course
2011	ABIGAIL NAUDET	Paul Naudet, Club of Porto Cima
2010	LINDSEY NEIBLING	Tony Bertels, Swope Memorial Golf Course
2009	ARDEN DARNELL	Ron Darnell, Mozingo Lake Golf Course

PUT LONG-LASTING DISEASE PROTECTION *INTO MOTION*



Posterity^{XT} Fungicide

- ✓ **UP TO 28 DAYS OF CONTROL** of more than 20 diseases including **BROWN PATCH, SUMMER PATCH** and **DOLLAR SPOT**
- ✓ **BROAD-SPECTRUM CONTROL** of more than 25 cool-season turf diseases on fairways, tees, greens or roughs

Posterity^{Forte} Fungicide

- ✓ **SPRING DEAD SPOT** control plus **TAKE-ALL ROOT ROT** control
- ✓ **UP TO 28 DAYS** of strong **DOLLAR SPOT** control with added **BROWN PATCH** and **LEAF SPOT** protection

Find your fit at GreenCastOnline.com or contact your local Syngenta territory manager:

Paul Carlson | (314) 308-0330 | paul.carlson@syngenta.com

syngenta[®]

All photos are either the property of Syngenta or are used with permission.

©2021 Syngenta. Important: Always read and follow label instructions. Some products may not be registered for sale or use in all states or counties and/or may have state-specific use requirements. Please check with your local extension service to ensure registration and proper use. GreenCast[®], Posterity[®], the Alliance Frame, the Purpose Icon and the Syngenta logo are trademarks of a Syngenta Group Company. All other trademarks are the property of their respective owners.

ADVANCED TURF SOLUTIONS[®]

We are your one stop shop for
fertilizer, chemical, and seed
solutions for your golf course.



John Dixon

jdixon@advancedturf.com
(816) 210-0071



Mike Schemel

mschemel@advancedturf.com
(573) 450-3552

Riverside, MO Warehouse

224 NW Parkway Road
Riverside, MO 64150
(816) 601-0104



PROFESSIONAL TURF PRODUCTS

Premier provider of beautification solutions

Count on it.



10935 EICHER DRIVE LENEXA, KS 66219

(913) 599-1449

www.proturf.com



Water in Turfgrass

Continued from page 6

growing turfgrasses. Roots contain the least amount of water, and stems the most.

Water moves by way of diffusion from the soil solution into root hairs. Once inside turfgrass plants, water helps protect them from sudden changes in temperature.

Both organic and inorganic molecules, including sugars and essential mineral nutrients, move to plant cells in water. An estimated 1% to 3% of the total amount of water taken up by turfgrasses every day is required to support internal biochemical reactions in plant cells as well as cell division and expansion.

Although this amount may appear small compared with the total amount of water turfgrasses use, it is vitally important for plant survival. Without water, turfgrasses would not be able to convert sunlight into chemical energy by way of photosynthesis ($6 \text{ CO}_2 + 6 \text{ H}_2\text{O} \rightarrow \text{C}_6\text{H}_{12}\text{O}_6 + 6 \text{ O}_2$). Warm-season turfgrasses have a more efficient photosynthetic system than cool-season turfgrasses do. Cool-season turfgrasses need about three times more water than warm-season turfgrasses to produce equal amounts of shoot and root tissue. As much as 600 pounds of water may be necessary to produce 1 pound of turfgrass dry matter.

Continued on next page

WINFIELD[®] UNITED

Helping You Win

Service. Solutions. Insights.

When it comes to your course, you need a partner that's consistent. Count on us for the right products and the technical insights you need to help your business thrive.

Call your WinField[®] United representative today to learn how we can help you win.

Ken Harding, Professional Sales Representative

785-521-8006 • KHarding@landolakes.com

adjuvants • dyes/wetting agents
herbicides • insecticides • fungicides
fertilizers • micronutrients

winfieldnitedpro.com



WinField is a registered trademark of WinField Solutions, LLC. © 2017 WinField Solutions, LLC

1-800-457-9571



Williams Lawn Seed

Distributing Quality Turfgrass Seed since 1930!!

Providing the Highest Quality Custom Blends and Mixing for all of your grass seed needs. Give us a call when your seed bank needs replenished

- **Revolution Fescue Blend**
- **Highest Quality Blue-grass, Ryegrass, Turf-Type Fescue, Fine Fescues**
- **Tee-2-Green Bentgrass**
- **SummerTime Blues Blend**
- **HGT Bluegrass**
- **Monaco Bermudagrass**
- **Starter Fertilizer**
- **WildFlowers**

Josh Williams 816-682-8794

Josh@wls.com

The uptake of water is crucial for maintaining cell turgidity and tissue turgor pressure. Turgor pressure is pressure exerted by the fluid within a plant cell, pushing the cell membrane against the cell wall, and it plays a key role in processes such as growth, development and stress response. Water uptake is also essential to turf's ability to tolerate wear and recover from the compressive forces of foot and equipment traffic. Water is the source of the pressure responsible for the unfolding of leaves, the opening of stomates, and the movement of roots and rhizomes in soils.

How Water Flows in Turf

Absorption

Soil

The oxygen level in soil pore spaces generally ranges from 0% to 21%, while the level of carbon dioxide usually ranges from 0.03% to 20% or more. The water vapor content in soils may exceed 80%. A small amount of oxygen is dissolved in rain or irrigation water. Air is also drawn downward as water moves vertically through the soil profile.



Rain-spattered tall fescue. Photo courtesy of Tom Samples

As turfgrasses grow, the transfer of water within and among the soil, the plant and the atmosphere is continuous. Most water absorption from soil takes place in the root hair zone just behind the root apex. The presence of root hairs increases the absorptive surface of the plant's root system. The length of the root hair zone varies among turfgrass species, and it is affected by the age of the roots and the environmental conditions during root development. Root hairs live for only a few weeks before being replaced as roots expand and mature. Root hair numbers decrease with increasing soil moisture.

The amount of soil water absorbed by turfgrasses is influenced by rooting depth and root number; root extension rate; the amount of plant-available water; transpiration rate; and soil temperature. Water is first absorbed at a shallow level and then at successively greater depths as the water supply is depleted. Some water absorption and translocation can occur through a lifeless root system.

Foliage

Water in either liquid or vapor form and in some foliar-applied nutrients enters aerial shoots of turfgrasses through tiny (less than 1 nanometer in diameter) cracks or transcuticular pores. The absorption of water from leaf and stem surfaces does not generally occur by way of a series of openings, the stomates, in part because of the presence of waxes. Foliar water absorption is usually more rapid in young rather than old leaves. The size of water droplets may range from 50 (fog) to 500 (extremely coarse) microns. The amount of water absorbed by foliage under "normal" growing conditions is only a minor portion of the total amount of water absorbed by turfgrass plants.

Evapotranspiration

Evapotranspiration, or ET, is the process by which water is transferred from plants and their surfaces to the atmosphere. It consists of two actions: evaporation and transpiration. Evaporation is the physical process resulting in a change of water on a plant surface from liquid to vapor. Transpiration is the plant process during which water is evaporated through the stomates, which are pores on the epidermis of leaves and stems that open and close to control the rate of gas exchange. The amount of water lost by evaporation from the surface of plants is minimal compared with that lost by transpiration. The conversion of liquid water to water vapor requires 570 calories per gram of water (~259,000 calories per pound). Given that energy is consumed as water in liquid form vaporizes, evapotranspiration produces a cooling effect.

Editor's note: Follow the authors and other University of Tennessee turfgrass scientists on Twitter at @UTturfgrass for information on timely turf topics, the latest research on weed control in turf, and continuing education opportunities.

Environmental conditions — including soil moisture, wind, sunlight (radiant energy), relative humidity (atmospheric vapor pressure) and temperature — affect the rate at which moisture is lost from turf surfaces. The rate of ET is usually low during dark, cloudy days with high relative humidity, low air temperature and very little wind. Highest ET rates occur on hot, sunny days with low relative humidity and moderate to high winds.

Fans may be positioned around the perimeter of golf course greens located in areas with restricted airflow. Golf course superintendents may activate the fans and/or routinely syringe in an effort to cool air and soil temperatures and limit bentgrass stress during summer months. Under certain environmental conditions, the application of a light film of water on aerial shoots (syringing) may result in a cooling effect as water absorbs the heat energy necessary to change from liquid form to vapor. A two-year study conducted at Auburn University revealed that, when temperatures were 90 degrees F or higher, the combination of fans and

Continued on next page

Water in Turfgrass

Continued from page 9

syringing reduced air and soil temperatures, although plant rooting depth did not significantly increase (3).

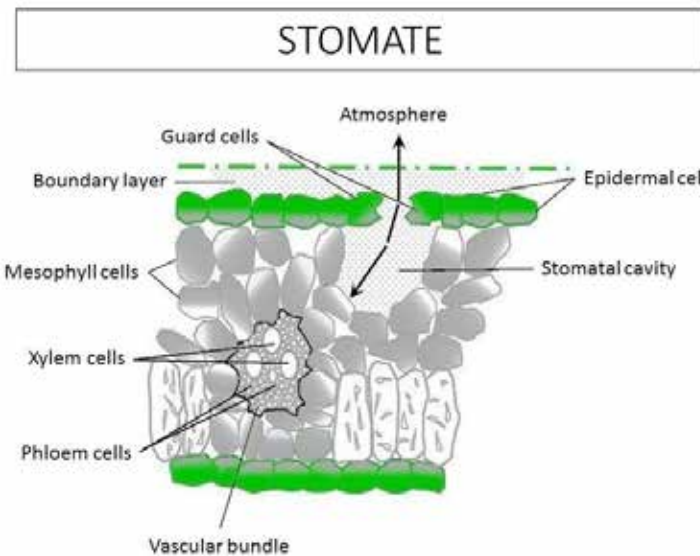
Transpiration

Transpiration is the release of water (evaporation) from leaves. A few definitions will be helpful for this discussion:

- Mesophyll cells make up most of the interior of the leaf between the upper and lower epidermal layers. These cells are relatively large and have vacuoles and many chloroplasts. As a result, they are specialized for photosynthesis.
- Root epidermal cells are very close and interlock, forming a layer that serves as a boundary between the plant root and the soil's "environment." One major role of the root epidermis is the absorption of water and mineral nutrients from the soil.

Stomatal transpiration

Depending on turfgrass species, the stomatal density most often ranges from 1,000 to 6,000 per square centimeter (about 155 to 930 per square inch) on the lower leaf surface, and from 4,000 to 10,000 per square centimeter (about 620 to 1,550 per square inch) on the upper surface. Although stomates make up only 2% to 3% of the total leaf area, they are often responsible for as much as 90% of the total water lost to the atmosphere by transpiration. The exchange of oxygen and carbon dioxide occurs through



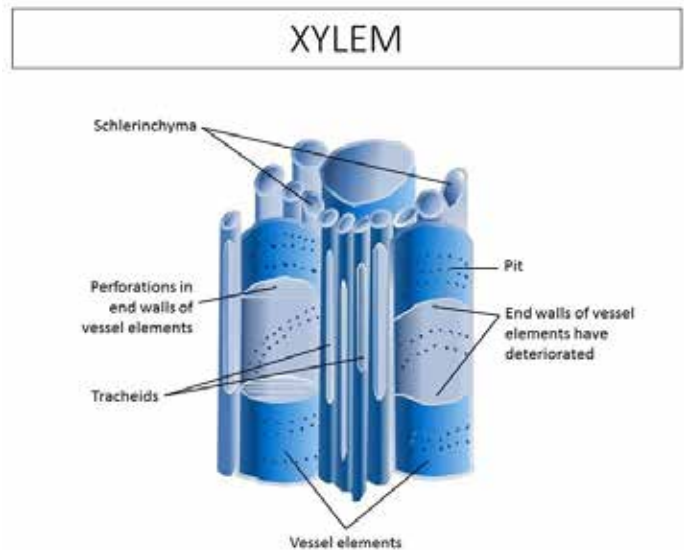
open stomates. In stomatal transpiration, water evaporates from the moist surfaces of mesophyll cells. Water vapor then moves into intercellular spaces before diffusing along a vapor pressure gradient through the intercellular spaces into the stomatal cavity and eventually to the atmosphere. The extent of this vapor pressure gradient is often used to predict the evaporation rate from turfgrasses to the atmosphere, with more evaporation occurring at

high air temperatures and low levels of relative humidity.

The stomatal transpiration rate is a function of the vapor pressure gradient. A portion of the water being transported from root epidermal cells to mesophyll cells of the stomates is diverted from the main transpirational stream to several types of specialized tissues depending on where the water potential gradient exists.

Xylem

Xylem is nonliving conductive tissue responsible for the movement of water and essential mineral nutrients from roots up to rhizomes, stolons, tillers and leaves. Xylem is continuous from the root hair zone of the roots through the mesophyll cells of the leaves.



Water enters root hairs by osmosis and moves in xylem, diffusing through cross walls that may or may not be perforated. Eventually, much of the water moves from leaves to the atmosphere through stomates as water vapor. A hydrostatic gradient develops between the evaporation zone of leaves and the water absorption region of roots. Water evaporation results in a decrease in the water potential of the mesophyll cells. This causes water in xylem to move toward the mesophyll cells. This "siphoning" by which water in liquid form is pulled from an area where it is most plentiful to an area where it is less plentiful is referred to as transpiration "pull." Transpiration pull causes water to diffuse from adjacent root cells into the lower regions of the xylem.

Cuticular transpiration

Although the majority of transpirational water loss occurs through stomates, some is lost by evaporation through the cuticle of epidermal cells while stomates are closed. The cuticle serves as a protective film covering and consists of polymers of both lipids and hydrocarbons containing wax.

The thickness of the cuticular layer has a major impact on the amount of cuticular transpiration. Although cuticle width is largely

Continued on next page

Reinders

— experience the —
REINDERS DIFFERENCE
 Top Products | Expert Partners | Always Accessible
 Value Added, Every Day!

SAVE AN ADDITIONAL 5% ON REINDERS.COM

<p>Michael Maas 913.217.0650 mmaas@reinders.com</p> <p>Chad Hinderliter 913.209.8334 chinderliter@reinders.com</p>	<p>Eric Pickrell 913.258.0453 epickrell@reinders.com</p> <p>Scott Wilcox 816.977.9853 swilcox@reinders.com</p>
---	--

Irrigation | Lighting | Turf & Landscape | Golf Course Maintenance | Outdoor Living | Holiday Lighting
 19942 W. 162nd Suite D Olathe, KS 66062 | Free Online Login: [Reinders.com/SignUp](https://reinders.com/SignUp)

Water in Turfgrass
Continued from page 10

controlled by genetics and varies among turfgrass species, research indicates that the plant cuticle is responsive to leaf age and environmental changes. For example, the mass of the cuticle and the amount of wax generally increase as leaf age increases, and shade results in a reduction in cuticle thickness.

Vascular Bundles

Vascular bundles are long strands of vascular tissue in leaves, stems and roots that contain xylem, phloem (more on phloem below) and supporting cells. The vascular bundles of the turfgrass leaf contain the same type of xylem and phloem structure as those of the stem. Most of the veins of a turfgrass leaf blade are made up of a single vascular bundle, while the leaf midrib may contain several vascular bundles. The arrangement of xylem and phloem elements in large veins resembles their arrangement in the stem.

Phloem

Part of vascular bundles, phloem is living tissue that transports soluble organic compounds made during photosynthesis, namely sugars, to where they're needed in the plant. Some water in turfgrasses is used by the phloem tissue to transport sugar in both

SCHOLARSHIP OPPORTUNITY

Deadline: October 29, 2021

The Heart of America GCSA Scholarship Program offers educational aid to deserving students in the turfgrass program at an accredited college or university in Kansas or Missouri.



Applicants will compete based on the overall qualifications determined by the Scholarship and Research Committee. Please help us get the word out by directing students to our website (www.hagcsa.org) to download an application and the criteria.

All applications must be received by October 29, 2021.



upward (acropetal) and downward (basipetal) directions. Phloem contains companion cells and sieve tubes. Glucose, sucrose and fructose move from "source" cells into companion cells, which are directly adjacent to phloem sieve tubes. The movement of sugars into sieve tubes reduces the water potential, and water is taken up from the xylem by osmosis, raising the pressure potential in the sieve tube. The differences in internal pressure drive the phloem sap along the sieve tube to "sink" cells. As sugars move into sink cells, the water potential in the sieve tube increases, and water moves by osmosis back into the xylem.

Water Forms

Snow

In addition to buffering turfgrasses from low temperature extremes and dehydration, a layer of snow also limits freezing and thawing of soils and soil heaving. Turfgrass plants may be lifted and roots exposed as soils heave.

Dew

Dew forms when the turf surface cools as a result of the loss of infrared radiation to a temperature lower than the dew point of the surrounding air. The relative humidity is 100% when the dew point and the temperature are the same. If the temperature drops any

Continued on next page

Water in Turfgrass

Continued from page 11

lower, condensation will result, and water droplets will form. Dragging a hose over bentgrass turf on golf greens in the morning to remove dew is a cultural practice intended to help prevent dollar spot (*Clarireedia* spp.), but it can spread the disease if fungi are active.

Guttation fluid

Under certain environmental conditions, water containing plant exudates (guttation fluid) may move through very small openings called "hydathodes" located at the ends of uncut leaves. These exudates contain mineral salts, sugars, amino acids and other organic compounds.



Frozen guttation fluid on bentgrass. Photo courtesy of Alan Windham

Drops of guttation fluid may also be the direct result of exudation from freshly cut leaves. Exudation usually occurs when environmental conditions cause rapid water absorption by roots and, at the same time, restrict transpiration. These conditions produce a rise in root pressure and an elevated turgor pressure at the leaf tip. Leaf exudation occurs most often during the night or early morning hours and is promoted by routine irrigation, high nitrogen fertility and close, frequent mowing. Warm days followed by cool nights also favor leaf exudation. Tip burn of leaves from a high solute concentration may be visible when droplets of guttation water evaporate or are reabsorbed by the leaf.

References

- Beard, J.B. 1973. Water (chapter 8). In: Turfgrass: Science and culture. Prentice Hall, Englewood Cliffs, N.J.
- Turgeon, A.J. 1999. The turfgrass environment (chapter 4). In: Turfgrass Management, Fifth Edition. Prentice Hall, Upper Saddle River, N.J.
- Guertal, E.A., E. van Stanten and D.Y. Han. 2005. Fan and syringe application for cooling bentgrass greens. *Crop Science* 45(1):245-250.

Tom Samples is a professor and turfgrass science Extension specialist at the University of Tennessee, Knoxville, Tenn. John Sorochan is a distinguished professor of turfgrass science at the University of Tennessee, Knoxville, Tenn. Alan Windham is a professor and University of Tennessee plant pathology Extension specialist whose focus includes the diagnosis and management of diseases of turfgrass and ornamental plants, mycology, microscopy, and macrophotography. He is based at the University of Tennessee Soil, Plant and Pest Center, Nashville, Tenn.

EQUIPMENT MANAGERS MEETING

PLAN TO ATTEND

October 4, 2021
Hallbrook
Country Club





A new pump station is NOT out of your budget.

Two things Turfwerks & Rain Bird provide our customers that the competition cannot:

- 1) Totally integrated irrigation solution systems.
- 2) Custom finance on your pump station system.

Call Brian or Jamie today to learn more today!

Brian Freeman - Territory Manager - Ph: 913-530-3903

Jamie Chambers - Service - Ph: 913-530-4729

Or visit our website...

www.Turfwerks.com/Irrigation/

TurfWerks

Update from GCSAA

By Steve Randall, GCSAA Central Plains Regional Representative



As the summer season winds down, I hope you had a successful busy stretch. It was great seeing many of you at the S&R Tournament at Canyon Farms. A great day and excellent turnout!

Thank a Superintendent

With the great success of our worldwide efforts in 2020, GCSAA and allied superintendent groups will hold "Thank a Golf Course Superintendent" day Tuesday, September 14! Last year's campaign via social media reached nearly seven million individuals. There were over four million impressions on the Golf Channel's marketing platforms and nearly 30,000 individuals watched the efforts on the Golf Channel's "Morning Drive" program.

The U.S., Canada, Australia, Europe all participated in the effort to thank you, the superintendent, for your efforts! We hope to continue the positive momentum this year and expand on our efforts to promote your work for the game.

Member App

Don't forget to download the new GCSAA Member App! It's available on all platforms.

Complete Your Facility BMP Today!

Kudos to the Heart of America Chapter, Missouri and all states

for completing the 50 states by 2020 BMP state manual. Step-by-Step videos are available to assist in developing your own facility BMPs, using that manual. Please reach out with any questions! GCSAA is happy to assist.

2021 GCSAA Golf Championships

GCSAA will conduct the 2021 Golf Championships in the Palm Springs area October 11-12.

Please visit www.GCSAA.org for all the information.



Registration opened August 13. With a limited field size, we hope you enter early. Three different competitions will be held over two days. The National Championship, Golf Classic, and Three-Person Scramble will be conducted. The JW Marriott Desert Springs Resort will be the host. Don't miss out.

2022 Conference and Trade Show

Our staff continues to make preparations for the 2022 GCSAA Conference and Trade Show in San Diego February 5-10. We are ready to get back together in person. An excellent education and professional development line up will be available. Events and times continue to be inputted into the event schedule. Registration will open November 2. For the most up-to-date information, please visit www.gcsaaconference.com.



FALL OUT CHALLENGE



Osage National Golf Club

400 Osage Hills Rd., Lake Ozarks, MO 65049

October 4 – River / Mountain

9:00am – Registration
10:00am – Shotgun
3:00pm – Shootout

October 5 – Links / River

8:00am – Arrival
8:30am – Shotgun
Following – Awards & Prizes

Cost: \$155

(Includes: golf, carts, pays three winning teams each day, four proximity prizes, box lunches on both days, breakfast on second day, 3 drink tickets per day, tee gift, and shootout that pays 4 places)

Lodging:

The Lodge at Port Arrowhead: 573-693-9988

King/Queen/Double - \$79 (plus tax)

Ask for Brittany or Hallie. Reference HAGCSA Event.

Vacation Rentals by Owner: <https://www.vrbo.com>

Title Sponsors



SiteOne
LANDSCAPE SUPPLY

Stronger Together

SAVE the DATE



*Special Thanks to our
2021 Partners*

PLATINUM PARTNERS



GOLD PARTNERS



SILVER PARTNERS



SAVE the DATE



Golf Track



*Recertification
for 3A & 3B*



*Latest Products
& Services*

This education conference will be the only place in Kansas and Missouri to hear about the latest products and services from sponsored vendors; receive continuing education credits, obtain recertification offerings for both KS & MO; and hear renown speakers on green industry turf, lawn and ornamental and golf course topics.

**Common
ground**
Education Conference
December 13-14, 2021

AWARD NOMINATIONS

Since 1933

Heart of America Chapter



GCSAA

Golf Course Superintendents Association of America

Environmental
Institute for Golf
Governor's Club



The Heart of America GCSA is formed to promote the welfare of the game of golf, the professional image and well-being of individual members and to unite industry professionals in the area.

Who Will Take Home this Year's Awards?

Each and every Heart member deserves credit for surviving a hectic spring and summer, but there are ones among us who deserve special recognition for the job they have done this year or over their careers. As a member, you know who these individuals are.

Now is the time to send in your nominations.

Accepting nominations for:

- Brian Breedlove Equipment Manager of the Year
- Assistant Superintendent of the Year
- Superintendent of the Year
- and the Chester Mendenhall Award

Review the criteria and complete the attached nomination form no later than **October 1, 2021**.

If you have any questions, please contact:

Ethan Shamet, Membership Chairman: ethan.shamet@jocogov.org

Kim Weitzel, Executive Director: kweitzel@westerneda.com



Reply to this email or complete attached form and fax to: 816-561-1991 or email to kweitzel@westerneda.com



RECOGNIZING OUTSTANDING MEMBERS

Each and every Heart member deserves credit for surviving a hectic spring and summer, but there are ones among us who deserve special recognition for the job they have done this year or over their careers.

As a member, you know who these individuals are. **Now is the time** to send your nominations for the Brian Breedlove Equipment Manager of the Year, The Assistant Superintendent of the Year, The Superintendent of the Year and The Chester H. Mendenhall Award. These prestigious awards will be given out at the Annual Meeting on November 3, 2021. Please submit your nominations by completing the reverse side and forwarding to the HAGCSA office no later than **October 1, 2021**.

Eligibility and Qualifications

Brian Breedlove Equipment Manager of the Year

This award will be presented annually to the equipment manager who has demonstrated dedication at their job over the past year.

The guidelines are as follows:

1. Must be a member of the Heart of America GCSA (Class EM); an in good standings.
2. Represents organization to the highest degree professionally and individually.
3. This award shall be governed by the equipment manager's achievements in any of the following.
 - Competent in mechanical skills.
 - Utilizes problem solving in an effective and efficient manner.
 - Assists course preparations if needed
 - Applies fiscal responsibility
 - Goes "Above and Beyond" to "Help the Cause."
4. These accomplishments must have occurred in the current year.

Assistant Superintendent of the Year

This award will be presented annually to the assistant who has demonstrated dedication and excellence at their job over the past year.

The guidelines are as follows:

1. Must be a member of the Heart of America GCSA (Class C); an in good standings.
2. Must be an assistant that represents their profession to the highest degree.
3. This award shall be governed by the assistant's achievements in any of the following.
 - Competency in agronomic skills
 - Ability to efficiently run the daily operations of the course
 - Effectively running course projects
 - Assisting in the preparation of their course for regional or national events
 - Involvement with local, regional, or national turf related associations
 - Strong involvement in course renovations and new course construction
 - Goal oriented and striving to become a superintendent
 - Exceptional contributions to this association through involvement
4. These accomplishments must have occurred in the current year.

Superintendent of the Year

This award, established in 1970, has been presented annually to the golf course superintendent who has demonstrated dedication and outstanding service to his or her profession.

The guidelines are as follows:

1. Must be a member of the Heart of America GCSA (Class A or Class B) in good standing.
2. Must be a superintendent that represents the organization and himself to the highest degree.
3. This award shall be governed by the superintendents achievements in either:
 - Excellence in golf course management
 - Preparation of his or her course for regional or national golf tournaments
 - Achievements for renovation or new golf course construction
 - Involvement with local, regional, or national turf related associations
 - Exceptional contributions to this association through involvement
4. These accomplishments must have occurred in the current year.

Chester Mendenhall Award

This award has been established to honor an individual who has devoted extensive time and effort to the promotion of golf, the art of greens-keeping and other related fields. Begun in 1983, this award is named after a golf course superintendent who dedicated his life to his profession.

The guidelines are as follows:

1. Must be a member of the Heart of America GCSA and in good standing.
2. Must be an individual that represents the organization and him or herself to the highest degree.
3. This award shall be governed by the individual's achievements over an extended period of time:
 - Outstanding service to this organization
 - Involvement with local, regional, or national turf related organizations
 - Continued support and service to the golf industry or his/her community



AWARD NOMINATION FORM

Please use this form to nominate individuals for the Brian Breedlove Equipment Manager of the Year, Assistant Superintendent of Year, Superintendent of the Year and the Chester H. Mendenhall Award. Qualifications and criteria for each award are listed on the back of this form. Please feel free to add sheets if additional room is needed.

AWARD WINNERS

Brian Breedlove Equipment Manager of the Year Award

- 2018 Daniel Heinze
- 2019 Mark Price
- 2020 Curtis Reinke

Assistant Superintendent of the Year Award

- 2005 Greg Milligan
- 2006 John Sheehe
- 2007 Jeff Stoecklein
- 2008 Johnny Brockus
- 2009 Matthew Delventhal
- 2010 Andrew Jones
- 2011 Andy Klein
- 2012 Randy Heinz & Brad Lackey
- 2013 Mitch Bradbury
- 2014 Nick Kray
- 2015 Chad Gilkison
- 2016 Marc Szablewski
- 2017 Derek Banwart
- 2018 Javier Aguilar & David Davied
- 2019 Grant Sherwood
- 2020 Tom Baier

Superintendent of the Year Award

- 1982 Carl Beer
- 1983 Chet Mendenhall
- 1984 Jack and Bill Robison
- 1985 Del King
- 1987 Duane Patton, CGCS
- 1988 Nels Lindgren, CGCS
- 1989 Cary Tegtmeyer, CGCS
- 1990 Ed Huggins
- 1992 Loren Breedlove
- 1993 Jeff Eldridge, CGCS
- 1994 Pat Finlen, CGCS
- 1995 Jon Francis
- 1996 Chuck Hybl, CGCS
- 1997 Jeff Elmer, CGCS
- 1998 Jim Naudet
- 1999 Mark Pierce
- 2000 Paul Tormanen
- 2001 Tony Bertels
- 2002 Duane Sander, CGCS
- 2003 Brian Ruder
- 2004 Rusty Hamman
- 2005 Jimmy Angelotti
- 2006 Doug Melchior
- 2007 Brad Minnick, CGCS
- 2008 Terry Rodenberg
- 2009 Daryl Pearson
- 2010 Scott Cummins
- 2011 Steve Wilson, CGCS
- 2012 Eric Bickel
- 2013 Scott Johnson, CGCS
- 2014 Duane Sander, CGCS
- 2015 Mike Lazar
- 2016 Sam Bailey
- 2017 Brian Agler
- 2018 Gary Sailer, CGCS
- 2019 Tom Storey
- 2020 Tyler Anderson

Chester Mendenhall Award

- 1987 Gil Collins
- 1988 Sandy Queen, CGCS
- 1989 Tom Kohout
- 1990 Dave Fearis, CGCS
- 1991 Duane Patton, CGCS
- 1992 Dick Stuntz, CGCS
- 1994 Meril Vanderpool
- 1995 Jud Coester
- 1996 Jim Shields
- 1997 Pat Finlen, CGCS
- 1998 Dave Fearis, CGCS
- 1999 Gene Eldridge
- 2000 Nels Lindgren, CGCS
- 2001 Dick Stuntz, CGCS
- 2002 Jeff Elmer, CGCS
- 2003 Melvin Anderson
- 2004 Loren Breedlove, CGCS
- 2005 Gary Higbie
- 2006 Tony Bertels
- 2007 Bill Maynard, CGCS
- 2008 Jeff Eldridge, CGCS
- 2009 Woody Moriarty
- 2010 Jeff White, CGCS
- 2011 Scott Johnson, CGCS
- 2012 Jim Naudet
- 2013 Terry Rodenberg
- 2014 Sandy Queen, CGCS
- 2015 Tim Nielsen
- 2016 Richard Shumate
- 2017 Steve Wilson, CGCS
- 2018 Brent Stephenson
- 2019 Duane Sander, CGCS
- 2020 Doug Melchior

Brian Breedlove Equipment Manager of the Year Award

Individual Nominated: _____

Reasons for Nominating: _____

Assistant Superintendent of the Year Award

Individual Nominated: _____

Reasons for Nominating: _____

Superintendent of the Year Award

Individual Nominated: _____

Reasons for Nominating: _____

Chester Mendenhall Award

Individual Nominated: _____

Reasons for Nominating: _____

Please submit your nomination to HAGCSA by October 1, 2021.
816-561-5323 . 816-561-1991 (fax) . kweitzel@westerneda.com (scan)



BOARD OF DIRECTORS 2020-2021

EXECUTIVE BOARD

PRESIDENT

Brent Stephenson

Great Life Golf
10310 N. Olive Ave.
Kansas City, MO 64155
816-500-5421
brent.stephenson@greatlifegolf.com
Class A • Term Expires: 2021

VICE PRESIDENT

Jonathan Bennett (Hospitality Suite, PRP Program)

Sunflower Hills Golf Course
12200 Riverview Ave.
Bonner Springs, KS 66012
913-291-5347
jonathan@sunflowerhillsgolfcourse.com
Class A • Term expires: 2021

SECRETARY/TREASURER

Tom Storey

Overland Park Golf Course
8500 Santa Fe Drive
Overland Park, KS 66212
913-897-3805
thomas.r.storey@gmail.com
Class A • Term Expires: 2021

PAST PRESIDENT

Ethan Shamet (Membership, Historical, Awards & Necrology & Slate of Officers)

Heritage Park Golf Course
16492 Hallett Street
Olathe, KS 66062
913-244-3988
ethan.shamet@jocogov.org
Class A • Term Expires: 2021

DIRECTORS

Mitch Bradbury (Chair: Tournaments & Programs; Co-Chair S&R)

Falcon Lakes Golf Course
14011 Hollingsworth Rd
Basehor, KS 66007
785-969-1637
mbradbury@falconlakesgolf.com
Class A • Term Expires: 2021

Matt Gourlay, CGCS, MG (Chair: BMP & R4R; Co-Chair: Tourn. & Prgm.)

Colbert Hills Golf Course
5200 Colbert Hills Dr.
Manhattan, KS 66503
785-313-2893
matt@colberthills.com
Class A • Term Expires: 2022

Darin Pearson (Chair: Scholarship & Research; Co-Chair: Education)

Eagle Bend Golf Course
P.O. Box 708
Lawrence, KS 66044
785-423-0617
dpearson@lawrenceks.org
Class A • Term Expires: 2022

Brent Racer, CGCS (Chair: Public Relations; Co-Chair: Rounds 4 Research)

Oakwood Country Club
9800 Grandview Rd.
Kansas City, MO 64137
913-231-8054
brentracer@gmail.com
Class B • Term Expires: 2021

Logan Slattery (Chair: Assist. Program & First Green; Co-Chair: Both)

Kansas City Country Club
6200 Indian Lane
Shawnee Mission, KS 66208
816-522-6533
lslattery@kccc.com
Class C • Term Expires: 2021

Spencer Roberts, CGCS (Chair: Education; Co-Chair PR)

Shadow Glen, The Country Club
26000 Shadow Glen Dr.
Olathe, KS 66061
913-963-7430
spencer@shadowglen.org
Class A • Term Expires: 2021

SPECIAL DIRECTORS

TJ Ridge (Chairman: Battle of the Heart Tourn.; Co-Chair: Assist. Program)

The Deuce at the National Golf Club of Kansas City
P.O. Box 14146
Parkville, MO 64152
913-265-6490
tjridge@thenationalgolfclub.com
Class C • Term Expires: 2021

Mark Price (Chairman: Equipment Managers Program)

Country Club of Leawood
12700 Overbrook Rd.
Leawood, KS 66209
913-963-6734
mprice11m@yahoo.com
Class EM • Term Expires: 2021

Matt Delventhal (Co-Chairman: Fall Out Tournament)

SiteOne Landscape Supply
109 NW Victoria Dr.
Lee's Summit, MO 64086
816-916-0239
mdelventhal@siteone.com
Class AF • Term Expires: 2021

Richard Shumate (Affiliate Liaison; Co-Chair: Fall Out Tournament)

Van Wall Equipment
9650 Dice Lane
Lenexa, KS 66215
913-397-6009
richard.shumate@vanwall.com
Class AF • Term Expires: 2021

HEARTBEAT CO-EDITORS

Andy Klein

Van Wall Equipment
9650 Dice Lane
Lenexa, KS 66215
913-707-3563
andy.klein@vanwall.com
Class AF

Mike Maas

Reinders, Inc.
19942 W. 162nd Street, Suite D
Olathe, KS 66062
913-217-0650
mmaas@reinders.com
Class AF

CHAPTER DELEGATE

Doug Melchior

Overland Park Golf Club
8500 Santa Fe Drive
Overland Park, KS 66212
913.238.9889
melchior douglas@gmail.com
Class A

GCSAA DIRECTOR

Jeff White, CGCS

Indian Hills Country Club
6847 Tomahawk Road
Mission Hills, KS 66208
913-362-4530
jwhite@ihcck.com
Class A

EXECUTIVE DIRECTOR

Kim Weitzel

Western Equipment Dealers Association
10010 N. Ambassador Dr.
Kansas City, MO 64153
816-561-5323 • cell/913-558-6376
kweitzel@westerneda.com

MEMBERSHIP APPLICATION



Dual Membership Requirement:

All Class A and Class B membership applicants must submit an application for membership or evidence of membership with the Golf Course Superintendents Association of America (GCSAA Membership #) and must maintain that membership thereafter.

Name _____ GCSAA Membership #: _____

Club or Company _____

Address _____

City _____ State _____ Zip _____

Phone _____ Fax _____

E-mail _____ Spouse's Name _____

Check here if you wish to receive your mailings at home.

Home Address: _____ City _____ St _____ Zip _____

JOB INFORMATION: LIST CURRENT EMPLOYMENT FIRST

DATES EMPLOYED		EMPLOYER NAME & CITY/STATE	TITLE
From _____	To _____	_____	_____
From _____	To _____	_____	_____
From _____	To _____	_____	_____

I hereby make application for membership in the Heart of America Golf Course Superintendents Association and attach herewith my dues for the current year. If accepted, I agree to uphold the by-laws of this Association and subscribe to the following code of ethics. To the end that confidence and respect may be enjoyed by members of our Association, the code of ethics is promulgated and observation of its provisions required.

- Every member shall take pride in his/her work and regard it as a profession in which all members strive to maintain its good name.
- Realizing that the best asset that a member can have is thorough knowledge of his/her business, he/she shall constantly try to improve his/her knowledge and effectiveness by freely exchanging experiences and ideas with fellow members and take advantage of all opportunities for improvement.
- He/she shall endeavor to maintain courteous relations with his/her employer and his/her associates and endeavor to have his/her employees take pride in doing their work well.
- In accomplishing his/her own and the Association's best interest, observance of the following suggestions are recommended.
 - **Seeking Employment:** 1. Seek counsel of local associations when applying for a position in a new district; 2. Recommend only qualified GCSAA members; 3. Ascertain the wage scale in the district in which you are seeking employment, then uphold that talk with the person who last held or now holds the position of Golf Course Superintendent.
 - **Visiting:** 1. Announce your HAGCSA or GCSAA membership when visiting; 2. Always contact the Superintendent of the course you are visiting; 3. Honor requests for technical help from golf courses only when channeled through the Superintendent of the course making the request.

Communication Consent: I agree to receive notices, advertisements, announcements, brochures, and other information from Heart of America Golf Course Superintendents of America via facsimile, telephone or e-mail. I further agree that my express permission to fax, telephone or e-mail me such notices and other information will continue and have no date of expiration, unless a written request is received indicating a change in permission.

Applicant's Signature _____ Date _____

Please include Annual Membership Dues with Application (Term: January to December):

Superintendents/\$130 - Assistant Superintendents/\$70 - Supplier/\$130 - Facility/\$50 - Equipment Manager/\$25 - Student/\$25

Heart of America Golf Course Superintendents Association

P.O. Box 419264 • Kansas City, MO 64141-6264 • 816-561-5323 • Fax 816-561-1991 • www.hagcsa.org • kwetizel@westerneda.com

OFFICE USE: Board Approval Database/Spreadsheet Database/Weblink Welcome Email/Website Password Roster Mailing Process Payment: _____

Vendor Directory

2021 Heartbeat Advertisers



Advanced Turf Solutions

Jeff Olsen
314-280-3416

Bayer Environmental Science

Wes Kleffner
913-205-5381

Commercial Turf Services

Bryan Wood
660-646-6207

Heartland Golf & Turf

Jim Naudet
913-927-9738

Norby Golf Course Design

Kevin Norby
952-361-0644

PBI Gordon

Heath Schesser
913-626-5463

Professional Turf Products

Brad Gray
913-915-6783

Reinders

Mike Maas
913-217-0650

Syngenta

Paul Carlson
314-308-0330

Turfwerks

Brian Freeman
913-530-3903

Williams Lawn Seed

Josh Williams
816-682-8794

Winfield United

Ken Harding
785-521-8006



Heart of America Chapter

GCSAA

Golf Course Superintendents Association of America

REPORT CHANGES

- > Have you **CHANGED** jobs?
- > Have you **CHANGED** your phone number?
- > Have you **CHANGED** your email address?

Report all changes to your association office so we can stay connected.

To Make Changes, Contact:
Kim Weitzel, Executive Director
816-561-5323; kweitzel@westernmeda.com

CHANGE AHEAD



Heart of America Golf Course Superintendents Association
P.O. Box 419264
Kansas City, MO 64141

September 2021